

Supporting your move to Oxford

Help us to help you if you have a disability
or specific learning difficulty



Thinking of applying to Oxford



Our **Disability Advisory Service** is able to help you if you have any additional needs, for example, if you are disabled, have sensory impairments, have difficulties with mental health or eating disorders, long term health conditions, Asperger syndrome or a specific learning difficulty, such as dyslexia.

You may not think you need **study support**, but applying to University can present new challenges. Oxford is committed to making sure that all its students are able to benefit from the great opportunities available here.

Teachers – If you teach students who are academically able and registered as having a special educational need please do encourage them to consider Oxford.

You might think that **mentioning your disability** or specific learning difficulty would affect your application. We can assure you this is not the case: admissions decisions are made on academic grounds alone.

Please do tell us about **any disability**, seen or unseen, on your UCAS application. We can decide together if any support is needed. The earlier you tell us, the better prepared you will be.

students with dyslexia, dyspraxia and other specific learning difficulties

1,800+ students registered with Oxford's disability service

students with Autistic Spectrum conditions

students with any long-term mental or physical health condition

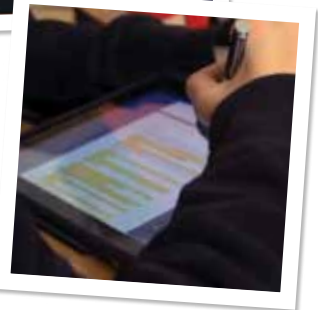
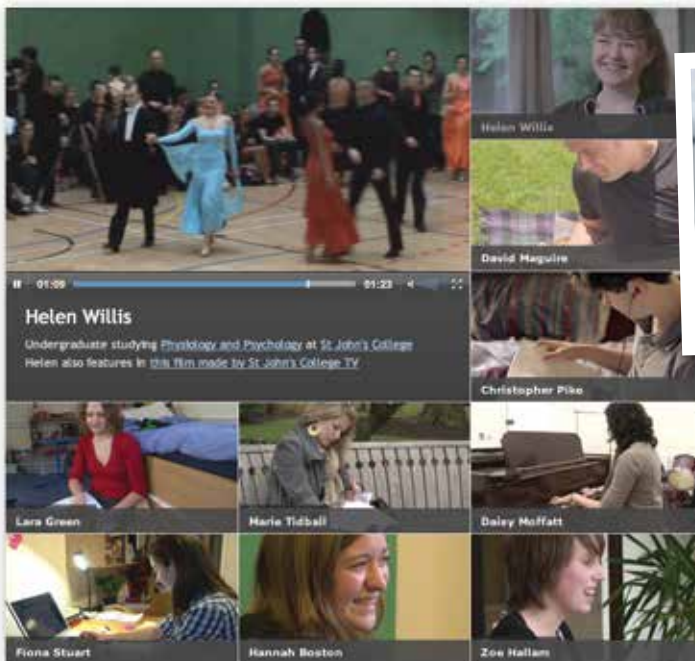


Have a look at the students with disabilities' videos at

ox.ac.uk/disabilityvideos

and hear from current Oxford students. Check out *Dyslexia Unbound*, a 15 minute film made by Oxford tutors for students with specific learning difficulties.

Do you already have examination arrangements such as extra time? If so – get in touch.



If you have any questions, please contact the Disability Advisory Service. We are happy to offer informal **advice** when you are first thinking of applying, help you with arrangements for attending open days, and assist with implementing study support requirements if your application is successful.



You can find detailed access information and helpful photos for individual University and college buildings in the online access guide at

www.admin.ox.ac.uk/access

and use the interactive map at

www.maps.ox.ac.uk

to plan your way around the city.



Do you need this leaflet in another format?



Download a high contrast version from **ox.ac.uk/moreinfo**

Braille, large print and audio formats are also available on request from:



Admissions Information Centre
+44 (0) 1865 288000
study@ox.ac.uk
ox.ac.uk/study

Find out more

Call **+44 (0)1865 280459**
for an informal chat or email
disability@admin.ox.ac.uk

Come and see us at the Open Day
Information Centre at a University
open day. **ox.ac.uk/opendays**

See our website at
www.ox.ac.uk/students/welfare/disability

Produced by the University of Oxford Public Affairs Directorate
and the Undergraduate Admissions Office
University Offices, Wellington Square, Oxford OX1 2JD

© The University of Oxford 2015

All rights reserved. No part of this publication may be reproduced, stored in a retrieval system, or transmitted, in any form or by any means, electronic, mechanical, photocopying, recording, or otherwise, without prior permission.

