

Welcome to the University of Oxford

For more than 800 years colleges and halls have existed around the city of Oxford. They began as medieval halls of residence for students under the supervision of a

Master. The oldest colleges, University, Balliol and Merton, were founded in the late 13th century. Green Templeton College is the newest and was established in 2008. Today, the 38 colleges and six permanent private halls are related to the University in a type of federal system.

Colleges and halls are communities in which students live and study. They are the main focus of their everyday lives. The college is responsible for students' academic progress through the tutorial system, and for their welfare. Each has its own sports facilities and teams. In addition, there is the opportunity to join University teams and take part in competitions such as the world-famous Boat Race.

Each college offers most of the subjects taught at the University, so at any college there will be students studying different subjects such as law, medicine and maths.

All colleges accept male and female students. All Souls is primarily an academic research institution and has no undergraduates. Harris Manchester recruits mature students. Kellogg, Linacre, Nuffield, St Antony's, St Cross, Wolfson and Green Templeton admit only graduate students.

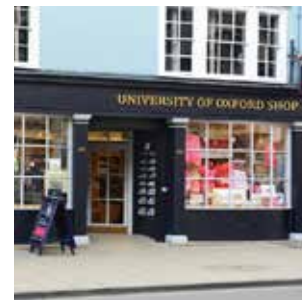
The Department for Continuing Education offers more than 1,000 short or part-time study courses. Students can study in Oxford, in the region or online, for pleasure and/or for an Oxford qualification. For more information about lifelong learning at Oxford, you can pick up a prospectus from Rewley House, Wellington Square or telephone 01865 270360.

Disabled Access



Many of our buildings are very old. We are making reasonable adjustments wherever possible to improve accessibility. The Access Guide at www.admin.ox.ac.uk/access provides information about accessibility, but to make the most of your visit we suggest you contact individual locations directly.

The Official University Shop



106 High Street,
Oxford OX1 4BW
www.oushop.com

Find the perfect venue in Oxford



Conference Oxford is the official conference and event marketing office for the University of Oxford and its Colleges, offering a free venue search amongst 63 member venues. Dedicated to finding you the perfect venue, we also offer help and advice on planning your conference or event.



The Colleges and the University of Oxford provide outstanding facilities for day meetings, residential conferences, celebratory dinners, parties and weddings.



Please visit our website for further information:

www.conference-oxford.com



Get in touch

Tel: 01865 276 190

Email: enquiries@conference-oxford.ox.ac.uk

Produced by the University of Oxford News and Information Office,
University Offices, Wellington Square, Oxford OX1 2JD Tel: 01865 270010
www.ox.ac.uk/visitors March 2017

Pictures from: ouimages.com/SilviaMunueraMoreno/WhitakerStudio
Cover: ouimages.com/JamesWhitaker



FREE OFFICIAL MAP

EXPLORE

THE UNIVERSITY OF OXFORD





Oxford is a beautiful city of stunning architecture, history and culture. You'll find ancient and modern colleges, fascinating museums and galleries, and plenty of parks, gardens and green spaces in which to relax. Plus, the city centre is small enough to cover on foot, and only a few minutes' walk from the main rail and coach stations.

Visitor Information Centre

N See map

Tourist information, accommodation service, tickets, guided walking tours, what's on, maps, guides, souvenirs, bureau de change.
Please note the Visitor Information Centre is not part of the University.

Opening times:
 Monday to Saturday: 9.30–17.00
 Sundays and Bank Holidays: 10.00–15.30

15–16 Broad Street, Oxford OX1 3AS
 Tel: 01865 686430
 Email: info@experienceoxfordshire.org
www.experienceoxfordshire.org






Best of both...
 Benefit from **fine quality print** along with **'in-house' competitive print rates**.
 Oxuniprint is a wholly owned subsidiary of Oxford University Press and delivers a professional commercial print service.



Unit 10 Oxonian Park, Langford Locks, Kidlington, Oxfordshire OX5 1FP • Telephone: 01865 514691
Oxuniprint.Enquiries@oup.com

Explore
the University
of Oxford



Visiting the colleges and halls of the University of Oxford



1 All Souls College

High Street, tel: 279379 www.all-souls.ox.ac.uk

Open: Sun–Fri 14.00–16.00. Closed in August, at Easter and from 22 Dec to early January

Charge: Free

Note: Maximum six people in a group

2 Balliol College

Broad Street, tel: 277777 www.balliol.ox.ac.uk

Open: Usually open 10.00–17.00 or dusk (whichever is earlier)

Charge: Adults £2, concessions and students £1

Note: Maximum 15 people in a group

3 Blackfriars

St Giles, tel: 278400

Open: Blackfriars Church is open to the public daily in daylight hours

4 Brasenose College

Radcliffe Square, tel: 277830 www.bnc.ox.ac.uk

Open: Mon–Fri 10.00–11.30
Sat–Sun 9.00–10.30 (term time)
Sat–Sun 10.00–11.30 (vacations)
14.00–16.30 (17.00 in summer)

Charge: £2 per person

Note: Groups must book in advance. Maximum 40 people in a group

5 Campion Hall

Not open to the public

6 Christ Church

St Aldate's, tel: 286573, 276492 www.chch.ox.ac.uk

Open: Mon–Sat 10.00–16.15, Sun 14.00–16.15.
Please see www.chch.ox.ac.uk/cathedral for a schedule of daily services at the Cathedral.

Charge: November–February £7, concessions £6
March–June £8, concessions £7
July–August £9, concessions £8
September–October £8, concessions £7

Note: Group rates available for parties of 15 or more. Large parties may be split. Advance booking for groups is recommended, particularly in July and August. Guided tours are available and may be booked in advance via the Christ Church website. The visitor entrance to Christ Church (Meadow Gate) is accessed from St Aldate's through the Memorial Garden and Christ Church Meadow.

7 Corpus Christi College

Merton Street, tel: 276700 www.ccc.ox.ac.uk

Open: 13.30–16.30

Charge: Free

Note: Groups (max 20) must book in advance and be accompanied by a Blue Badge Guide

8 Exeter College

Turl Street, tel: 279600 www.exeter.ox.ac.uk

Open: Daily 14.00–17.00

Charge: Free

Note: Maximum 15 people in a group

9 Green Templeton College

Woodstock Road, tel: 274770 www.gtc.ox.ac.uk

Open: By appointment only

Note: Maximum 20 people in a group
Graduate college

10 Harris Manchester College

Mansfield Road, tel: 271006 www.hmc.ox.ac.uk

Open: Chapel only

Mon–Fri 10.00–17.30, Sat 9.00–12.00

Charge: Free, donations welcome

Note: Groups must book in advance

11 Hertford College

Catte Street, tel: 279400 www.hertford.ox.ac.uk

Open: Daily 14.00–16.30

Charge: Free

Note: Maximum 10 people in a group.
Larger groups must book in advance

12 Jesus College

Turl Street, tel: 279700 www.jesus.ox.ac.uk

Open: Daily 14.00–16.30

Charge: Adults £3, seniors and children over 5 £1

Note: Maximum 20 people in a group.
Groups must book in advance

13 Keble College

Parks Road, tel: 272727 www.keble.ox.ac.uk

Open: 14.00–17.00

Charge: Free

Note: Guided tours and groups of 8 or more must book in advance

14 Kellogg College

60–62 Banbury Road, tel: 612000

www.kellogg.ox.ac.uk

Open: Mon–Fri 9.00–17.00

Charge: Free

Note: Graduate college committed to flexible learning

15 Lady Margaret Hall

Norham Gardens, tel: 274300 www.lmh.ox.ac.uk

Open: Daylight hours

Charge: Free

16 Linacre College

St Cross Road, tel: 271650 www.linacre.ox.ac.uk

Open: By appointment only

Note: Graduate college

17 Lincoln College

Turl Street, tel: 279800 www.linc.ox.ac.uk

Open: Mon–Fri 14.00–17.00,

Sat–Sun 11.00–17.00

Charge: Free, donations welcome

Note: Maximum six per group. No guided tour groups

The information given in this leaflet is intended for guidance only. Opening hours are subject to functions, examinations, conferences, holidays, etc., and charges are subject to review.

You are advised to check opening times and admission charges in advance. Groups should book in advance and all visitors should report to the Lodge on arrival. We want you to enjoy your visit, but please remember that our colleges and halls are places of residence, work and study, and you are asked not to enter staircases, rooms and areas marked as private. Dogs, except guide dogs, are not allowed in colleges and halls.

18 Magdalen College

High Street, tel: 276000 www.magd.ox.ac.uk
Please check the website or contact the college for current information

19 Mansfield College

Mansfield Road, tel: 270999
www.mansfield.ox.ac.uk
Open: Mon–Fri 9.00–17.00
Charge: Free, donations welcome
Note: Groups (max 15) must be accompanied by a guide

20 Merton College

Merton Street, tel: 276310 www.merton.ox.ac.uk
Open: Mon–Fri 14.00–17.00 (or dusk),
Sat–Sun 10.00–17.00 (or dusk)
Charge: Adults £3. Free to children. Free to University members and alumni (and up to three guests). Guided tours of college and medieval library £5 per person (summer only).
Note: Groups of more than 8 must book in advance

21 New College

New College Lane, tel: 279555
www.new.ox.ac.uk
Open: Easter–Oct 11.00–17.00 (via New College Lane Gates),
Oct–Easter 14.00–16.00 (via Holywell Street Gates)
Charge: Adults £4, concessions £3
Entry is free to Oxford residents
Note: Maximum 20 people in a group. Larger groups will need to split.

22 Nuffield College

New Road, tel: 278500 www.nuffield.ox.ac.uk
Open: Mon–Fri 9.00–17.00
Charge: Free
Note: Maximum six people in a group
Graduate college

23 Oriel College

Oriel Square, tel: 276555 www.oriel.ox.ac.uk
Open: 14.00–17.00 or dusk (whichever is earlier). Closed in Trinity (Summer) term
Charge: Adults £2; concessions £1
Guide books are available at £1 each
Note: Maximum 12 people in a group

24 Pembroke College

Pembroke Square, tel: 276444 www.pmb.ox.ac.uk
Note: Pembroke College is only open to prospective students, alumni, members of the University or those with a connection to the college.

25 The Queen's College

High Street, tel: 279120 www.queens.ox.ac.uk
Open: By appointment only
Charge: Free

Note: Groups only, must be accompanied by a Blue Badge Guide booked through the Visitor Information Centre

26 Regent's Park College

Pusey Street, tel: 288120 www.rpc.ox.ac.uk
Open: By appointment only

27 St Anne's College

Woodstock Road, tel: 274800 www.st-annes.ox.ac.uk
Open: 9.00–17.00
Charge: Free

28 St Antony's College

Woodstock Road, tel: 284700 www.sant.ox.ac.uk
Open: By appointment only
Note: Graduate college

29 St Benet's Hall

Not open to the public

30 St Catherine's College

Manor Road, tel: 271700 www.stcatz.ox.ac.uk
Open: Daily 9.00–17.00
Charge: Free
Note: Advance booking is required for groups of 10 or more. Please contact the Lodge

31 St Cross College

St Giles, tel: 278490 www.stx.ox.ac.uk
Open: By appointment only
Note: Graduate college

32 St Edmund Hall

Queen's Lane, tel: 279000 www.seh.ox.ac.uk
Open: Daily 10.00–16.00
Charge: Free
Note: Maximum 12 people in a group.
Larger groups by appointment

33 St Hilda's College

Cowley Place, tel: 276884 www.st-hildas.ox.ac.uk
Open: By appointment only
Charge: Free

34 St Hugh's College

St Margaret's Road, tel: 274965
www.st-hughs.ox.ac.uk
Open: Please check in advance
Charge: Free, donations welcome

35 St John's College

St Giles', tel: 277300 www.sjc.ox.ac.uk
Open: 13.00–17.00 or dusk (if earlier)
Charge: Free
Note: Maximum 14 in a group, accompanied by a guide. Larger groups will be split

36 St Peter's College

New Inn Hall Street, tel: 278900 www.spc.ox.ac.uk
Open: 10.00–17.00
Charge: Free, donations welcome
Note: Advance booking is required for groups of five or more

37 St Stephen's House

16 Marston Street, tel: 613500
www.ssho.ox.ac.uk
Open: By appointment only
Charge: Free, donations welcome
Note: Please contact the College Secretary

38 Somerville College

Woodstock Road, tel: 274800
www.some.ox.ac.uk
Open: 14.00–16.30
Charge: Free, donations welcome
Note: Large groups must book in advance

39 Trinity College

Broad Street, tel: 279900 www.trinity.ox.ac.uk
Open: Term Time: Mon–Fri 09.30–12.15,
13.30–16.00
Sat–Sun (during term) 13.00–16.00
Sat–Sun (out of term) 09.30–16.00,
Spring / summer open till dusk
Charge: Adults £3, concessions £2. No charge for group leaders / teachers accompanying school groups (group only charged)

40 University College

High Street, tel: 276602 www.univ.ox.ac.uk
Open: Outside term time only. 10.00–12.00;
14.00–16.00
Charge: Adults £2, concessions £1, children under 12 free
Note: Large groups by arrangement

41 Wadham College

Parks Road, tel: 277900 www.wadham.ox.ac.uk
Open: Term time 13.00–16.15
Vacation 10.30–11.45, 13.00–16.15
Charge: Free
Note: Guided groups are asked to notify the lodge on arrival

42 Wolfson College

Linton Road, tel: 274100 www.wolfson.ox.ac.uk
Open: Daylight hours
Charge: Free
Note: Groups should notify the Lodge in advance of their visit. Graduate college

43 Worcester College

Worcester Street, tel: 278300 www.worc.ox.ac.uk
Open: Daily 14.00–17.00
Charge: Free
Note: Maximum 6 people in a group

44 Wycliffe Hall

Banbury Road, tel: 274200
www.wycliffe.ox.ac.uk
Open: By appointment
Charge: Free

Museums, University buildings and other places of interest

A Ashmolean Museum

Beaumont Street, tel: 278000
www.ashmolean.org
Open: Tue–Sun 10.00–17.00
Closed Mondays
Bank Holiday Mondays 10.00–17.00
Charge: Free
Note: For group booking, tel 278015

B Bate Collection of Musical Instruments

Faculty of Music, St Aldate's, tel: 276139
www.bate.ox.ac.uk
Open: Mon–Fri 14.00–17.00,
Sat (term time only) 10.00–12.00
Charge: Free

C Bodleian Library

Broad Street, tel: 277094 www.bodleian.ox.ac.uk
Email: tours@bodleian.ox.ac.uk
Open: Mon–Fri 9.00–17.00,
Sat 9.00–16.30, Sun 11.00–17.00
Charge: Free access to the Old Schools Quadrangle, Proscholium display and Shop. Daily admission to the Divinity School. Multi-language audio tours and daily guided tours of the Library are available. Groups need to book in advance. See website for bookings and ticket prices. Admission free to alumni, Bodleian cardholders and Friends of the Bodleian. Up to four guests will also be admitted free.

D Botanic Garden

High Street, tel: 286690
www.botanic-garden.ox.ac.uk
Open: Daily from 9.00 (12.00 Mondays), seasonal closing times, last admission 45 minutes before closing time
Charge: Adults £5, concessions £3.50, season tickets available. Entry is free to children under 18 (when accompanied by a family member), registered disabled visitors and their carers, University and OUP employees, Oxford and Oxford Brookes students.
Note: **Harcourt Arboretum** is a short drive out of Oxford. Visit harcourt-arboretum.ox.ac.uk or call 343501 for more information.

E Christ Church Picture Gallery

Entrance via Oriel Square, tel: 276172
www.chch.ox.ac.uk/gallery
Open: Gallery closed Tuesdays Oct–June
October–May: Mon, Wed–Sat 10.30–13.00, 14.00–16.30, Sun 14.00–16.30
June: Mon, Wed–Sat 10.30–17.00, Sun 14.00–17.00
July–September: Mon–Sat 10.30–17.00, Sun 14.00–17.00
Charge: Adults £4, concessions £2, University members free
Note: If you pay to visit Christ Church, you are entitled to a 50% reduction on the Gallery entrance charge. All groups should book in advance.

F Museum of the History of Science

Broad Street, tel: 277280 www.mhs.ox.ac.uk
Open: Tue–Sun 12.00–17.00
Charge: Free
Note: Advance booking for groups of 15+

G OUP Bookshop

116/117 High Street, tel: 242913
www.facebook.com/oxforduniversitypressbookshop
Open: Sept–June: Mon 10.00–17.30,
Tue–Sat 9.00–17.30, Sun 11.00–17.00
July–Aug: Mon 10.00–19.00,
Tue–Sat 9.00–19.00, Sun 11.00–17.00

H Pitt Rivers Museum

South Parks Road, tel: 270927 www.prm.ox.ac.uk
Entry is via the Museum of Natural History, Parks Road
Open: Tues–Sun and Bank Holiday Mondays 10.00–16.30, Mon 12.00–16.30
Check website for Christmas and Easter opening
Charge: Free
Note: All groups should book in advance

I Sheldonian Theatre

Broad Street, tel: 277299 www.ox.ac.uk/sheldonian
Open: Mon–Sat 10.00–16.30 (15.30 in winter)
Charge: Adults £3.50, concessions and groups £2.50
Note: Opening hours vary when the theatre is in use for ceremonies, meetings or concerts.

J University Church of St Mary the Virgin

High Street, tel: 279111
www.university-church.ox.ac.uk
Offers excellent panoramic views of Oxford
Open: Mon–Sat 9.00–17.00 (July/Aug 18.00)
Sun 12.00–17.00 (July/Aug 18.00)
Coffee shop with garden, serving organic food, 8.00–18.00
Charge: For the tower only: £4 adults, £3 children and concessions, £12 families.
Note: Entrance to the church is free. Principal Sunday service is Eucharist at 10.30.

K University Museum of Natural History

Parks Road, tel: 272950 www.oum.ox.ac.uk
Open: Daily 10am–5pm
Charge: Free
Note: All groups should book in advance

L University Parks

Parks Road, tel: 282040 www.parks.ox.ac.uk
Open: 7.45 (closing times vary)
Charge: Free

M University of Oxford Shop

106 High Street, tel: 247414 www.oushop.com
The University of Oxford's official store selling a wide range of stylish gifts, clothing and more.
Open: Mon–Sat 9.00–17.30, Sun 11.00–17.00
Summer Mon–Sat 9.00–18.30, Sun 11.00–17.00

N Visitor Information Centre

Broad Street, tel: 686430
www.visitorfordandoxfordshire.com
Open: See panel for opening times

O Weston Library

Broad Street, tel: 277094
Open: **Blackwell Hall and Café:**
Mon–Fri 8.30–17.00
Sat 9.00–17.00
Sun 11.00–17.00
Exhibitions:
Mon–Sat 10.00–17.00
Sun 11.00–17.00
Shop:
Mon–Fri 10.00–17.30
Sat 10.00–17.00
Sun 11.00–17.00
Charge: Free

1 University Offices

Wellington Square, tel: 270098
www.admin.ox.ac.uk

The telephone area code for Oxford is 01865

Opening times are subject to University functions, bank holidays, conferences, etc. Please check with the place you wish to visit. Charges and opening hours are subject to change.

Cycladic figurine from the Ashmolean Museum

