

# Events in Oxford



## OXFORD OPEN DAYS

29 AND 30 JUNE AND 16 SEPTEMBER 2016

These main undergraduate open days are the best time to visit Oxford and explore student life, because so many colleges and departments will be open and running events led by tutors and students.

There are other, smaller open days throughout the year, including:

Law	14, 15 and 16 March 2016
Materials Science	15, 16 and 22 March 2016
Classics	18 March 2016
Oriental Studies	30 April 2016
Modern Languages	30 April 2016
Mathematics	23 and 30 April 2016
Computer Science	23 April 2016
Geography	13 June 2016

**[ox.ac.uk/opendays](http://ox.ac.uk/opendays)**

Keep an eye on our website for other events throughout the year, including talks and tours in some UK school holidays:

**[ox.ac.uk/ugvisit](http://ox.ac.uk/ugvisit)**

## FOR UK YEAR 12 STUDENTS

### UNIQ summer schools

#### – July/August

UNIQ summer schools are free, week-long intensive academic programmes run by current tutors at Oxford. Participants live in an Oxford college and take part in a variety of social activities. Applications are welcome from students currently in their first year of A-levels (or equivalent) at UK state schools and colleges, particularly from schools and areas with little or no history of sending students to Oxford. The UNIQ application deadline is in February. **[www.uniq.ox.ac.uk](http://www.uniq.ox.ac.uk)**

### Shadow an Oxford student

Each year, over 200 Year 12 students come to Oxford to shadow a current undergraduate through OUSU's Target Schools scheme. The aim is to debunk the various myths about studying at Oxford, and to increase representation from students whose schools don't have much history of coming to study here. Find out if you're eligible: email [studentshadowing@ousu.ox.ac.uk](mailto:studentshadowing@ousu.ox.ac.uk) or visit **[targetschools.ousu.org](http://targetschools.ousu.org)**.





In 2014/15,  
at over

**3,000**

outreach events,  
we opened doors to

**230,000+**

people

## FOR SCHOOLS

### Pathways

The Oxford Pathways Programme provides information, advice and guidance on higher education and Oxford for targeted UK non-selective state schools. It runs free events in Oxford from Year 10 Taster Days to a Year 13 Application Information Day. Schools can check eligibility by emailing [pathways@admin.ox.ac.uk](mailto:pathways@admin.ox.ac.uk) or visiting [www.pathways.ox.ac.uk](http://www.pathways.ox.ac.uk).

## WIDENING ACCESS AND PARTICIPATION

Oxford works with parents, teachers and state school students aged 11–18 (Years 6–13), both locally and nationally, to help them understand what they could gain from further or higher education, and what type of study might suit them best. From one-hour workshops to residential events, we offer an exciting range of opportunities for a variety of ages and target groups. Get in touch: [wap@admin.ox.ac.uk](mailto:wap@admin.ox.ac.uk) or [ox.ac.uk/wap](http://ox.ac.uk/wap).

## FOR TEACHERS

We recognise the key role that teachers, careers advisors and counsellors play in students' decision-making. Oxford offers a variety of events to support teachers in their work, like conferences and study weeks. Find the list, and sign up for email updates, at [ox.ac.uk/teachers](http://ox.ac.uk/teachers).

Each year, Oxford undergraduates are asked to make nominations for an **Inspirational Teachers Award**. This could be for someone who inspired them to apply to Oxford, fostered their passion for a particular subject or supported them through the application process.

Each February we offer a two-day residential conference for international guidance counsellors which provides an insight into all aspects of life at Oxford as well as our admissions process.

[ox.ac.uk/igcc](http://ox.ac.uk/igcc)

We met with

**2,000+**

teachers and  
advisers in 2015

*...as a teacher she fostered  
and nurtured this talent and  
gift within me ...a gift that  
I believed did not exist.*

*Lydia, 3rd year*



# Events near you



## SCHOOL AND COLLEGE VISITS

Oxford runs a range of events for potential applicants. Travelling throughout the UK and beyond, we meet with students, teachers, parents and carers. We welcome the chance to deliver presentations and workshops, and talk with interested students about all aspects of applying to, and studying at, Oxford. Where possible, we encourage schools to coordinate with other local schools because this enables us to work with more students over the year and, we believe, enriches students' interaction. For more details and to arrange a visit, please get in touch:

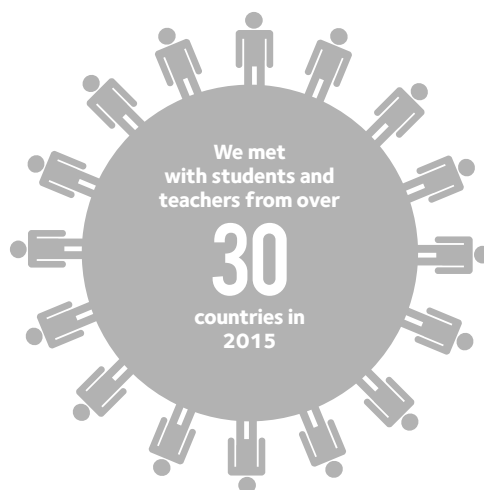
**[teachers@admin.ox.ac.uk](mailto:teachers@admin.ox.ac.uk)**

### UK

Each local authority in the UK is linked with a particular Oxford college. This means that every school and college has a first point of contact within the University.

These regional links are part of our commitment to engage with schools and colleges, and do not have any bearing on the admissions process.

To find your college link or arrange a visit please see **[ox.ac.uk/linkcolls](http://ox.ac.uk/linkcolls)**.



### International

We hold events for prospective applicants, their parents and careers counsellors in a number of countries around the world, with presentations tailored to different audiences. If we can't come to your school in person, we will be happy to deliver a Skype presentation to students.

For information on events in your country, please email [internationalrecruitment@admin.ox.ac.uk](mailto:internationalrecruitment@admin.ox.ac.uk) or see **[ox.ac.uk/intvisit](http://ox.ac.uk/intvisit)**.





## CONFERENCES AND CONVENTIONS

### For schools

Oxford University attends **higher education fairs and conventions** across the UK. These are an opportunity to speak to an Oxford representative face to face, to find out more about our undergraduate courses and get advice on the application process. [ox.ac.uk/hefairs](http://ox.ac.uk/hefairs)

### Oxford and Cambridge Student

**Conferences** are another way to find out more about Oxford without travelling far from home. They take place in March each year, with detailed sessions on the admissions process, student life, interviews, student finance and the many different courses at Oxford and Cambridge. Admissions tutors, admissions office staff and current undergraduates are there to answer questions about applying to Oxford or Cambridge. [studentconferences.org.uk](http://studentconferences.org.uk)

### For teachers

We offer a series of **Regional Teachers' Conferences** across the UK to equip teachers with the best possible advice for their students on applying to Oxford, and to break down any misconceptions that might deter students from applying. The conferences cover all aspects of the admissions process: from identifying candidates to writing

references and preparing candidates for admissions tests and interviews. The conferences visit different regions across the UK on a biennial basis. For details and to sign up to our **teachers' e-newsletter**, please visit [ox.ac.uk/teachers](http://ox.ac.uk/teachers).

**Study Higher** is a partnership of Buckinghamshire New University, Oxford Brookes University, the University of Oxford and the University of Reading along with six further education colleges. As a partnership, Study Higher is committed to providing informative and inspiring educational events and activities for pre-16 students based in Milton Keynes, Oxfordshire, Buckinghamshire and Berkshire. [www.studyhigher.ac.uk](http://www.studyhigher.ac.uk)

Oxford University is participating in the HEFCE **National Networks for Collaborative Outreach (NNCO) scheme** at both a local and national level. This scheme brings together Oxford's Regional Links Scheme and Cambridge's Area Links Scheme through collaborative events and a joint outreach website, including a series of webinars around the admissions process. The aim is to offer more schools opportunities to find out about studying at Oxford or Cambridge. [www.oxfordandcambridgeoutreach.co.uk](http://www.oxfordandcambridgeoutreach.co.uk)





# Visiting Oxford



## AUDIO TOURS

Our admissions audio tours are an ideal way to explore the city. You can take a tour whenever you like – or just listen at home.

These downloadable mp3 tours with accompanying maps cover different courses you may be interested in, as well as information about colleges, libraries and other places of interest along the route, interviews with students and guidance on how to apply.

**ox.ac.uk/audiotours**

## PLACES TO VISIT

Many colleges are open to visitors, especially during the afternoons. The University's museums and some other buildings are also open to the public. For further details and opening times please see **ox.ac.uk/visitors**.

Please note that University departments are not usually open to the public, except on open days (see page 184).

## ADMISSIONS INFORMATION

You don't have to visit Oxford to contact one of our experienced and knowledgeable staff. Our admissions information team is here to help with any questions you might have about applying to study at Oxford, or what it's like to be a student here.

**+44 (0) 1865 288000**

**study@ox.ac.uk**

## OXFORD OPEN DAYS

**29 AND 30 JUNE AND 16 SEPTEMBER 2016**

On the University Open Days we have an information centre based in the Examination Schools, at 75–81 High Street, OX1 4BG. (See page 184.)

*I love talking to people about Oxford, and explaining how it all works.*

*Jan, Undergraduate Admissions and Outreach Communications team*

*We get all sorts of questions: from qualifications and course options to the best place to get lunch.*

*Lisa, Undergraduate Admissions and Outreach Communications team*





## GETTING HERE

### Rail

Oxford has two railway stations: the main station is located off Frideswide Square to the west of the city centre and runs regular direct services to London Paddington, Birmingham New Street and others. Oxford Parkway is to the north of the city, next to the Water Eaton park and ride, and runs fast direct trains to and from London Marylebone via Bicester village.

National Rail Enquiries: +44 (0) 8457

484950 [www.nationalrail.co.uk](http://www.nationalrail.co.uk)

Chiltern Railways: +44 (0) 1926 729914

[www.chilternrailways.co.uk](http://www.chilternrailways.co.uk)

### Coaches from cities

X90 (London): [www.oxfordbus.co.uk](http://www.oxfordbus.co.uk)

Oxford Tube (London – runs 24h):

[www.oxfordtube.com](http://www.oxfordtube.com)

National Express (nationwide):

[www.nationalexpress.com](http://www.nationalexpress.com)

### Coaches from airports

London Heathrow (every 30 minutes during the day); Gatwick (every hour) with a reduced service overnight (both airports): [www.oxfordbus.co.uk](http://www.oxfordbus.co.uk)

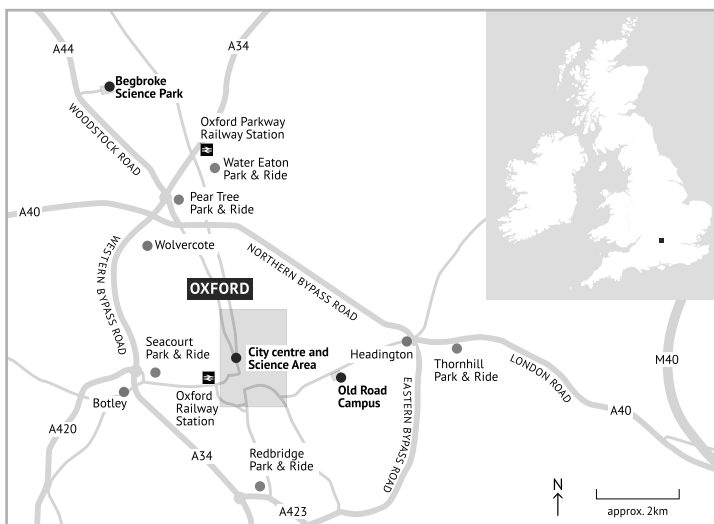
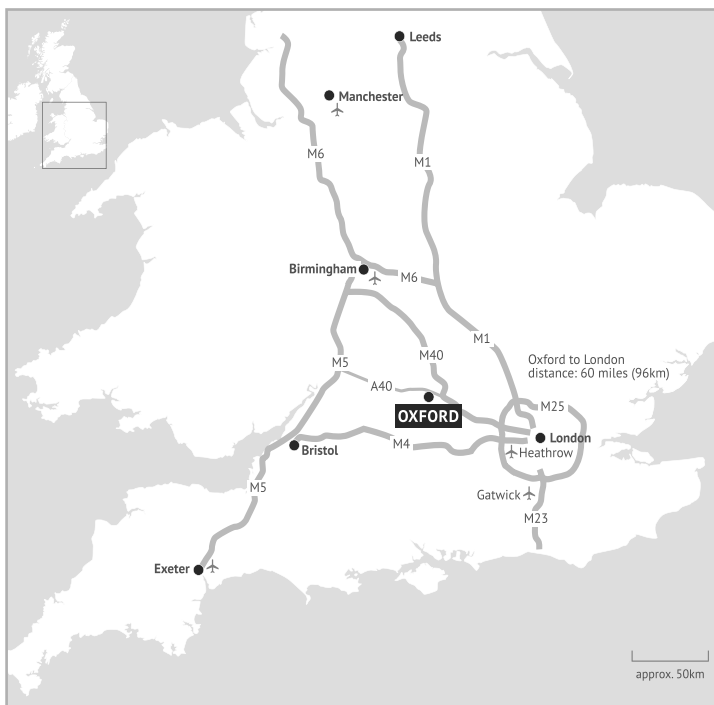
London Stansted (every 2 hours):

[www.nationalexpress.com](http://www.nationalexpress.com)

### Parking

Parking in Oxford is severely limited and to be avoided if possible. Park and Ride bus services operate between the city centre and parking areas on the outskirts (see map). Open days ([ox.ac.uk/opendays](http://ox.ac.uk/opendays)) are busy, so please arrive early and allow extra time for travel into the city: [www.oxfordbus.co.uk](http://www.oxfordbus.co.uk)

You may like to listen to local radio for traffic updates: **BBC Oxford** 95.2 FM  
**Heart FM** 102.6 and 97.4 FM **Jack FM** 106.8 and 106.4 FM



## A

Accelerated Medicine	49, 110
Access work	184, 185, 186, 187
Accommodation	37, 144
Admissions Information Centre	188
<i>Alternative Prospectus</i>	33, 148
Ancient and Modern History	84
Ancient History, Classical Archaeology and	52
Ancient Near Eastern Studies	122
Anthropology	42, 97
Anthropology, Archaeology and	42
Application, open	148
Application procedure	12
Arabic	24, 60, 76, 117, 122, 131, 141, 143
Archaeology	42, 52
Archaeology and Anthropology	42
Archaeology, Classical, Ancient History and	52
Art, Fine	78
Art, History of	94
Ashmolean Museum	22
Audio tours	188

## B

Baliol College	149
Bate Collection	23, 120
Biochemistry (Molecular and Cellular)	44
Biological Sciences	46
Biomedical Engineering	70
Biomedical Sciences	48
Blackfriars Hall	150
Bodleian Library	20, 23
Botanic Garden	23, 36
Brasenose College	151
Bursaries	3, 19

## C

Careers	34
Cells and Systems Biology	48
Chemical Engineering	70
Chemistry	50
Childcare	15, 25
Chinese	24, 117, 122
Choral scholarships	29
Christ Church	152
Civil Engineering	70
Classical Archaeology and Ancient History	52
Classics	24, 54, 56, 58, 60
Classics and English	24, 56
Classics and Modern Languages	24, 58
Classics with Oriental Studies	24, 60
Clinical Medicine	110
Closing dates (applications)	12
Clubs and societies	26–33
Colleges, choice of	144–148
Computer Science	62, 64, 104
Computer Science and Philosophy	64
Computer Science, Mathematics and	104
Continuing Education	15
Corpus Christi College	153
Costs	18
Counselling Service	25
Courses	38
Czech (with Slovak)	24, 58, 74, 76, 90, 114, 117, 126

## D

Deadlines	12
Debating	33
Disabilities, Students with	16
Drama	30, 37

## E

Earth Sciences (Geology)	66
Economics and Management	68
Economics, History and	86
Economics, Philosophy, Politics and (PPE)	128
Egyptian	60
Egyptology	122
Electrical Engineering	70
Employment on leaving Oxford	34
Engineering Science	70
English and Modern Languages	24, 74
English, Classics and	24, 56
English, History and	88
English Language and Literature	72
English language requirements	14
Entrance requirements	6, 14, 40
Equal Opportunities	17
Erasmus	10, 45, 59, 75, 91, 99, 115, 119, 127
European and Middle Eastern Languages	24, 76, 117
European Law	98
Examinations	4
Exeter College	154
Experimental Psychology	136, 138

## F

Fast Track Medicine	110
Fees and expenses	18
Finance	18
Fine Art	78
French	24, 58, 74, 76, 90, 114, 117, 118, 126
French (Law)	98
Funding	18

## G

Gender equality	17
Geography	80
Geology (Earth Sciences)	66
German	24, 58, 74, 76, 90, 114, 117, 118, 126
German (Law)	98
Graduate destinations	34
Graduate Entry Medicine	110
Greek, Ancient	52, 54, 56, 58, 60, 84, 117, 140, 142
Greek, Modern	24, 58, 74, 76, 90, 114, 117, 118, 126

## H

Halls of residence	4, 37, 144
Harassment	25
Harris Manchester College	155
Health and student welfare	25
Hebrew	24, 60, 76, 117, 122, 140, 142
Hebrew Studies	122
Hertford College	156
Higher Education Fairs and Conferences	187
History	52, 82, 84, 86, 88, 90, 92, 94
History (Ancient and Modern)	84
History and Economics	86
History and English	88
History and Modern Languages	24, 90
History and Politics	92
History of Art	94
How to apply	12
Human Sciences	96

## I

Immigration	14
Information Centre	188
Information Engineering	70
International qualifications	14
International students	14
Interviews	13
Islamic Studies	24, 60, 122, 140, 142
IT Services	24
Italian	24, 58, 74, 76, 90, 114, 117, 118, 126
Italian (Law)	98
iTunes U	24

## J

Japanese	24, 117, 122
JCR (Junior Common Room)	144
Jesus College	157
Jewish Studies	122, 140, 142
Journalism	33
Jurisprudence (Law)	98

## K

Keble College	158
---------------	-----

## L

Lady Margaret Hall	159
Language Centre	24
Languages, European and Middle Eastern	24, 76, 117
Languages, Modern	24, 58, 74, 76, 90, 114, 117, 118, 126
Languages, Modern, and Classics	24, 58
Languages, Modern, and English	24, 74
Languages, Modern, and History	24, 90
Languages, Modern, and Linguistics	24, 118
Languages, Modern, and Philosophy	24, 126
Latin	24, 52, 54, 56, 58, 60, 84, 117
Law (Jurisprudence)	98
Law with Law Studies in Europe	98
LGBTQ equality	17
Liaison Team for Schools and Colleges	185, 186
Libraries	20
Lincoln College	160
Linguistics, Modern Languages and	24, 118
Linguistics, Psychology, Philosophy and	138
Literae Humaniores (Classics)	24, 54, 56, 58, 60
Live music	29, 36
Living expenses	18
Living out	37
Loans	19

## M

Magdalen College	161
Management, Economics and	68
Mansfield College	162
Map of the University	192
Materials Science	100
Mathematics	102, 104, 106, 108
Mathematics and Computer Science	104
Mathematics and Philosophy	106
Mathematics and Statistics	108
Mature students	15
Mechanical Engineering	70
Medicine	110
Mental health	16, 17, 25
Merton College	163
Middle Eastern Languages, European and	24, 76
Modern Languages	24, 58, 74, 76, 90, 114, 117, 118, 126
Modern Languages and Linguistics	24, 118
Modern Languages, Classics and	24, 58
Modern Languages, English and	24, 74

## PLEASE READ CAREFULLY

Modern Languages, History and.....	24, 90
Modern Languages, Philosophy and.....	24, 126
Molecular and Cellular Biochemistry.....	44
Museum of the History of Science.....	22
Museums.....	22
Music.....	29, 36, 120

<b>N</b>	
Natural History (Museum of).....	22
Near Eastern Studies, Ancient.....	122
Neuroscience.....	48
New College.....	164
Nightlife.....	36

<b>O</b>	
Open application.....	148
Open days.....	184
Open days for teachers.....	185
Organ scholarships.....	29
Oriel College.....	165
Oriental Studies.....	24, 60, 122, 142
Oriental Studies, Theology and.....	24, 142
Oriental Studies with Classics.....	24, 60
OUSU.....	33, 184
Outreach work.....	184–187
Overseas applicants.....	14
Oxford as a city.....	36
Oxford Union (Debating Society).....	33
Oxford University and its colleges.....	4, 144
Oxford University Music Society.....	29
Oxford University Student Union (OUSU).....	32, 184

<b>P</b>	
Part-time courses.....	15
Pembroke College.....	166
Permanent Private Halls.....	144
Persian.....	24, 60, 76, 117, 122
Philosophy.....	54, 64, 106, 126, 128, 130, 134, 138
Philosophy and Modern Languages.....	24, 126
Philosophy and Theology.....	130
Philosophy, Computer Science and.....	64
Philosophy, Mathematics and.....	106
Philosophy, Physics and.....	134
Philosophy, Politics and Economics (PPE).....	128
Philosophy, Psychology, and Linguistics.....	138
Physics.....	132, 134
Physics and Philosophy.....	134
Pitt Rivers Museum.....	23
Plant Sciences.....	46
Polish.....	24, 114, 117
Politics, History and.....	92
Politics, Philosophy, and Economics (PPE).....	128
Portuguese.....	24, 58, 74, 76, 90, 114, 117, 118, 126
PPE.....	128
Psychology, Experimental.....	136, 138
Psychology, Philosophy, and Linguistics.....	138

<b>Q</b>	
Qualifications required for entrance.....	6, 14, 40
Queen's College (The).....	167

<b>R</b>	
Race equality.....	17
Regent's Park College.....	168
Regional conferences.....	187
Religious Studies.....	130, 140, 142
Requirements for entrance.....	6, 40
Ruskin School of Art.....	78
Russian.....	24, 58, 74, 76, 90, 114, 117, 118, 126

<b>S</b>	
St Anne's College.....	169
St Benet's Hall.....	170
St Catherine's College.....	171
St Edmund Hall.....	172
St Hilda's College.....	173
St Hugh's College.....	174
St John's College.....	175
St Peter's College.....	176
St Stephen's House.....	177
Sanskrit.....	24, 60, 117, 122, 130
Scholarships.....	18
Schools and colleges liaison.....	186
Second undergraduate degree.....	15
Senior Status students.....	15
Shadowing schemes.....	184
Slovak (with Czech).....	24, 58, 74, 76, 90, 114, 117, 126
Societies and clubs.....	26
Somerville College.....	178
Spanish.....	24, 58, 74, 76, 90, 114, 117, 118, 126
Spanish (Law).....	98
Sport.....	26
Statistics, Mathematics and.....	108
Student conferences.....	187
Student finance.....	18
Student recruitment team.....	186
Student societies.....	26–31
Student support and wellbeing.....	25
Student Union (OUSU).....	32, 184
Studying at Oxford.....	4
Summer schools.....	184

<b>T</b>	
Target Schools.....	184
Teachers, Events and resources for.....	184–187
Teaching methods.....	4
Theatre.....	30, 37
Theology and Religion.....	130, 140, 142
Theology and Oriental Studies.....	142
Theology, Philosophy and.....	130
Tours.....	184, 188
Travelling to Oxford.....	189
Trinity College.....	179
Tuition Fees.....	18
Turkish.....	24, 60, 76, 117, 122
Tutorials.....	5

<b>U</b>	
UCAS.....	12
UNIQ.....	184
University College.....	180

<b>V</b>	
Visas.....	14
Visiting Oxford.....	184, 188, 189
Visiting students.....	14

<b>W</b>	
Wadham College.....	181
Wellbeing and health.....	25
Worcester College.....	182
Wycliffe Hall.....	183

<b>XYZ</b>	
Zoology.....	46

The University will seek to deliver each course in accordance with the descriptions set out in the relevant course webpage at the time of application and the corresponding Course Information Sheet sent to applicants with their offer of a place. The course webpages can be accessed at [ox.ac.uk/courses](http://ox.ac.uk/courses).

However, there may be situations in which it is desirable or necessary for the University to make changes in course provision, either before or after enrolment.

The University will not make very substantial changes to courses (for example, a change to the course title, significant restructuring, substantial change in course content, or the introduction of a progression hurdle) which would impact on students who have already begun their course. In exceptional circumstances it may be necessary for the University to make such a change after acceptance of a place by an offer-holder. This will not happen less than 3 months before enrolment. The offer-holder will be notified of the change (as compared to the description in their Course Information Sheet) and offered the opportunity to withdraw from the course.

Other changes could be made to course content, delivery and teaching provision because of developments in the relevant subject, enhancements in teaching or assessment practice, requirements of external accreditation processes, changes in staffing, resource constraints or changes in the availability of facilities. Such changes will take account of the reasonable expectations of prospective and current students.

Offer-holders will be notified of any material change (as compared to the description in their Course Information Sheet) and offered the opportunity to withdraw from the course.

On-course students will be consulted about any proposed material course change (except changes which are solely for their benefit) which would affect the part of the course which they have already started studying.

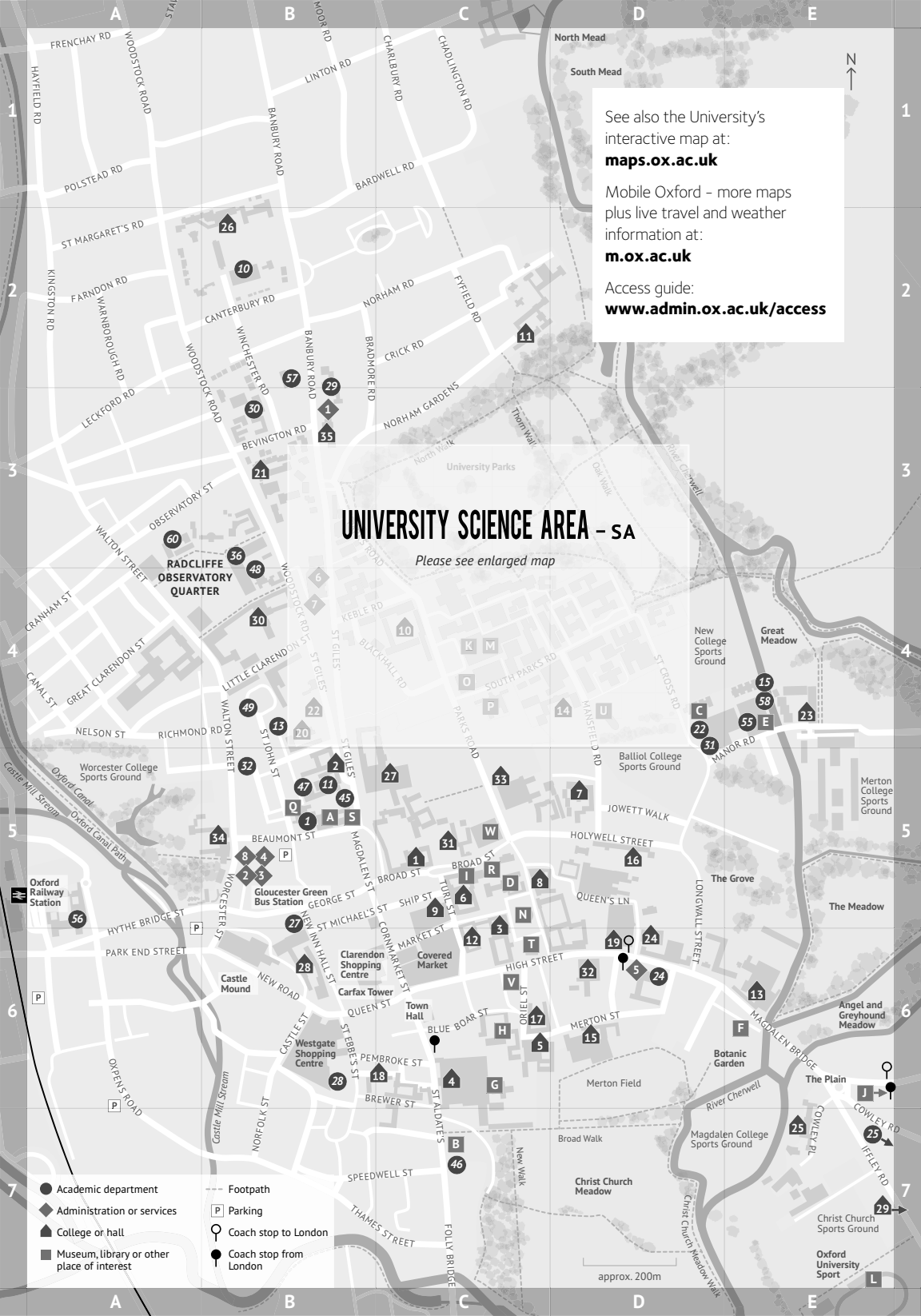
The provision of course options which depend on the availability of specialist teaching, or on placement at another institution, cannot be guaranteed in advance.

### GENERAL IMAGE CREDITS

Front cover images credited to John Cairns, with additional photographs credited to Lee Atherton, Amalia Bastos, Edmund Blok, Richard Budd, Dan Cunliffe, Shannon Dudley, David Fisher, Rob Judges, Mazz Image/paloaltomedia.com, Piers Nye, Oliver Robinson, PA Wire/Press Association Images, Phil Sayer, Greg Smolonski, Yunli Song, Matt Stuart, Xiaodan Sun, Pawel Sytniewski, Paul Tait, Ian Taylor, Richard Wakefield, Alex Wood, and the University of Oxford Images. We acknowledge iStockPhoto, Morguefile and Shutterstock for images. And also gratefully acknowledge pictures from Oxford University's libraries, museums and departments. Thanks to Oxford colleges' staff and students who have supplied any additional photographs.

Please contact the University's Design and Publications Team for details of individual images: +44 (0) 1865 280545.

# GETTING AROUND OXFORD



## Undergraduate colleges and halls

- 1 Balliol c5
- 2 Blackfriars\* B5
- 3 Brasenose c6
- 4 Christ Church c6
- 5 Corpus Christi c6
- 6 Exeter c5
- 7 Harris Manchester D5
- 8 Hertford c5
- 9 Jesus College c5
- 10 Keble C4, SA
- 11 Lady Margaret Hall c2
- 12 Lincoln c6
- 13 Magdalen E6
- 14 Mansfield D4, SA
- 15 Merton D6
- 16 New College D5
- 17 Oriel c6
- 18 Pembroke c6
- 19 Queen's College, The D6
- 20 Regent's Park\* B4, SA
- 21 St Anne's B3
- 22 St Benet's Hall\* B4, SA
- 23 St Catherine's E5
- 24 St Edmund Hall D6
- 25 St Hilda's E7
- 26 St Hugh's B2
- 27 St John's c5
- 28 St Peter's B6
- 29 St Stephen's House\* E7 [off map]
- 30 Somerville B4
- 31 Trinity c5
- 32 University College D6
- 33 Wadham c5
- 34 Worcester B5
- 35 Wycliffe Hall\* B3

\* Permanent private hall

## Departments

SA: See University Science Area map below

- 1 Archaeology B5
- 2 - 4 Biochemistry SA
- 5 - 6 Biological Sciences SA
- 7 - 9 Chemistry SA
- 10 Chinese Studies B2
- 11 Classics Centre B5
- 12 Computer Science SA
- 13 Continuing Education B4
- 14 Earth Sciences SA
- 15 Economics E4
- 16 - 21 Engineering Science SA
- 22 English Faculty D4
- 23 Experimental Psychology SA
- 24 - 25 Fine Art (Ruskin School) D6 & E7 [off map]
- 26 Geography SA
- 27 History Faculty B5
- 28 History of Art B6
- 29 Human Sciences B2
- 30 Japanese Studies B3
- 31 Law Faculty D4
- 32 Linguistics, Philology & Phonetics B5
- 33 - 35 Materials SA
- 36 Mathematical Institute B3
- 37 - 44 Medical Sciences SA
- 45 Modern Languages (Taylor Institution) B5
- 46 Music Faculty c7
- 47 Oriental Institute B5
- 48 Philosophy Centre B4
- 49 Phonetics Laboratory B4
- 50 - 54 Physics SA
- 55 Politics & International Relations E4
- 56 Said Business School AS
- 57 Social & Cultural Anthropology B2
- 58 Sociology E4
- 59 Statistics SA
- 60 Theology A3

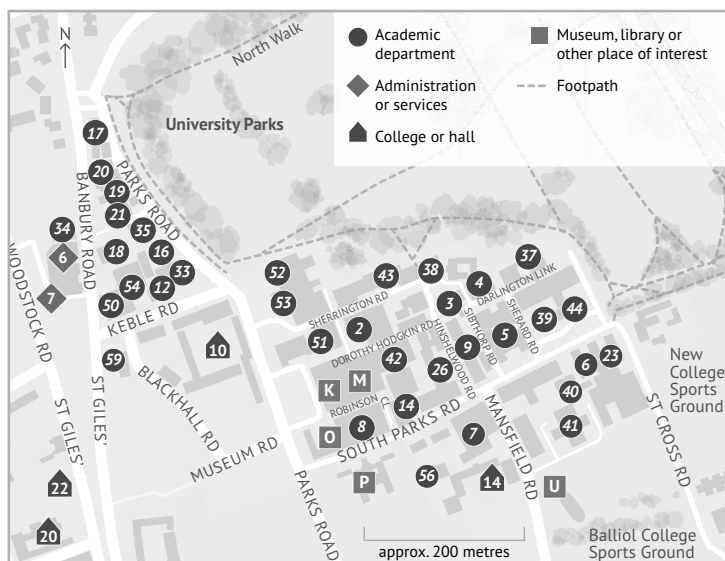
## Student services

- 1 Careers Service B3
- 2 Counselling Service B5
- 3 Disability Advisory Service B5
- 4 Equality & Diversity Unit B5
- 5 Examination Schools D6
- 6 IT Services (helpdesk) B4, SA
- 7 Language Centre B4, SA
- 8 Student Union Offices B5

## Museums, libraries and other places of interest

- A Ashmolean Museum of Art & Archaeology B5
- B Bate Collection of Musical Instruments c7
- C Bodleian Law Library D4
- D Bodleian Library c5
- E Bodleian Social Science Library E4
- F Botanic Garden E6
- G Christ Church Cathedral c6
- H Christ Church Picture Gallery c6
- I Museum of the History of Science c5
- J Old Road Campus & hospital sites E6 [off map] - see map on page 189
- K Oxford University Museum of Natural History C4, SA
- L Oxford University Sport E7
- M Pitt Rivers Museum C4, SA
- N Radcliffe Camera (Bodleian) c5
- O Radcliffe Science Library C4, SA
- P Rhodes House C4, SA
- Q Sackler Library B5
- R Sheldonian Theatre c5
- S Taylor Institution Library B5
- T University Church, St Mary's c6
- U University Club D4, SA
- V University of Oxford Shop c6
- W Weston Library c5

## UNIVERSITY SCIENCE AREA - SA



For further information see:

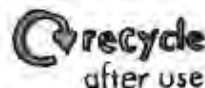
[ox.ac.uk/visitors/maps\\_and\\_directions/science\\_area.html](http://ox.ac.uk/visitors/maps_and_directions/science_area.html)

**Produced by** the University of Oxford Public Affairs Directorate

**Distributed by** Undergraduate Admissions and Outreach, University Offices, Wellington Square, Oxford OX1 2JD

Telephone: +44 (0) 1865 288000

**Printed by** Belmont Press, Great Britain on UPM Fine Offset



# OX.AC.UK/STUDY



[www.facebook.com/the.university.of.oxford](https://www.facebook.com/the.university.of.oxford)



[www.twitter.com/OxOutreach](https://www.twitter.com/OxOutreach)



[www.youtube.com/Oxford](https://www.youtube.com/Oxford)



iTunes or <http://itunes.ox.ac.uk>

