

# Colleges

All undergraduate students at Oxford become members of an academic community called a college, as well as being members of the wider University. Colleges offer a close and supportive environment to foster the academic development and welfare of every one of their students. Colleges are also physical buildings, with a dining hall, bar, common room and library. Everyone lives in college accommodation in their first and usually last year.

You'll have a college tutor to oversee your academic development: an academic who teaches and does research. They interview applicants and decide who should study at their college. They may teach you, or arrange tutorials for you in college.

You'll become part of a JCR (Junior Common Room). This refers to all the undergraduate students at the college, who elect a 'JCR committee' to organise events and campaign on behalf of

students. (It also refers to a room in college, where you can take time out to meet friends, get a cup of coffee, and watch TV.)

PPHs (Permanent Private Halls) are similar to colleges except smaller, offer fewer courses and were founded by particular Christian denominations. Students at PPHs are members of the University just like students at colleges, with access to the same University facilities and activities.



Visit colleges on Oxford open days;  
see [ox.ac.uk/opendays](http://ox.ac.uk/opendays)

I love the family feel of the college. It's not too big but not too small. I know everyone in every year and we are all genuinely friends.

Anna, 3rd year

The friendly family atmosphere that you get with such a close-knit community is almost like a second family and makes you feel at home.

Jack, 1st year

The staff and porters are lovely!

Michael, 3rd year

My college has a reputation for being 'small and friendly', and one of my favourite things about it is that it's actually true! I love how we are a little family, and whenever you enter the library or walk through the quad, people smile and wave. There's also a really great welfare team who just make me feel so looked after and safe here. Most of all, I love how much this feels like home.

Chloe, 2nd year

I love the fact that everyone knows everyone, and that approaching other year groups isn't intimidating and college really subverts the idea of exclusivity.

Leila, 2nd year

Whenever I'm heading to the library after being in insanely busy central Oxford, the stillness always makes me stop and breathe and remember what's important!

Nyasha, 1st year



# Which colleges offer my course?

	Balliol	Blackfriars	Brasenose	Christ Church	Corpus Christi	Exeter	Harris Manchester	Hertford	Jesus College	Keble	Lady Margaret Hall	Lincoln	Magdalen	Mansfield	Merton	New College	Oriel
Archaeology and Anthropology							●	●		●			●				
Biochemistry (Molecular and Cellular)			●	●	●	●		●			●	●	●			●	●
Biological Sciences	●		●	●				●	●	●	●		●		●	●	●
Biomedical Sciences	●				●	●				●		●	●			●	●
Chemistry	●		●	●	●	●		●	●	●	●	●	●		●	●	●
Classical Archaeology and Ancient History	●		●	●	●	●				●	●	●	●		●	●	●
Classics	●		●	●	●	●			●		●		●		●	●	●
Classics and English			●	●	●	●	●		●		●		●				●
Classics and Modern Languages	●		●	●		●			●		●		●		●	●	●
Classics and Oriental Studies	●		●	●		●	●						●			●	●
Computer Science	●									●			●		●	●	●
Computer Science and Philosophy	●							●							●	●	●
Earth Sciences (Geology)						●											
Economics and Management	●		●	●		●	●	●	●	●	●				●	●	
Engineering Science	●		●	●		●	●	●	●	●	●	●	●	●		●	●
English Language and Literature	●		●	●	●	●	●		●	●	●	●	●	●	●	●	●
English and Modern Languages	●		●	●		●		●	●	●	●		●		●	●	●
European and Middle Eastern Languages			●	●					●				●			●	
Fine Art			●	●		●					●		●			●	
Geography			●	●				●	●	●				●			
History	●		●	●	●	●	●	●	●	●	●	●	●	●	●	●	●
History (Ancient and Modern)	●		●	●	●	●				●	●	●	●		●	●	●
History and Economics	●		●				●	●	●							●	●
History and English	●				●	●	●		●						●		
History and Modern Languages	●		●	●				●	●	●	●	●	●		●	●	●
History and Politics	●		●	●	●		●	●	●	●	●	●	●	●	●	●	●
History of Art				●			●										
Human Sciences							●	●		●			●	●			
Law (Jurisprudence)	●		●	●	●	●	●	●	●	●	●	●	●	●	●	●	●
Law with Law Studies in Europe	●		●	●	●	●	●	●	●	●	●	●	●	●	●	●	●
Materials Science					●									●			
Mathematics	●		●	●	●	●			●	●	●	●	●	●	●	●	●
Mathematics and Computer Science	●				●	●				●			●		●	●	●
Mathematics and Philosophy	●		●	●	●	●		●	●				●		●	●	●
Mathematics and Statistics			●	●	●	●			●	●	●	●	●	●	●	●	
Medicine	●		●	●	●	●		●	●	●	●	●	●		●	●	●
Medicine (Graduate Entry)							●						●				
Modern Languages	●		●	●		●		●	●	●	●	●	●		●	●	●
Modern Languages and Linguistics	●		●	●		●		●	●	●	●	●	●		●	●	●
Music				●		●		●	●	●	●	●	●		●	●	●
Oriental Studies	●			●			●	●						●			
Philosophy and Modern Languages	●		●	●		●		●	●	●	●	●	●		●	●	●
Philosophy, Politics and Economics (PPE)	●	●	●	●	●	●	●	●	●	●	●	●	●	●	●	●	●
Philosophy and Theology		●		●			●		●	●	●			●			●
Physics	●		●	●	●	●		●	●	●	●	●	●		●	●	●
Physics and Philosophy	●		●	●	●	●		●			●		●		●	●	●
Psychology (Experimental)			●	●	●		●		●		●		●			●	
Psychology, Philosophy and Linguistics			●	●	●		●		●		●		●			●	
Theology and Religion		●		●			●			●	●			●			●
Theology and Oriental Studies		●					●				●						●

This information is correct as of January 2016, but is subject to change. For marked courses, available course combinations vary between colleges.

Pembroke	Queen's	Regent's Park	St Anne's	St Benet's Hall	St Catherine's	St Edmund Hall	St Hilda's	St Hugh's	St John's	St Peter's	St Stephen's House	Somerville	Trinity	University College	Wadham	Worcester	Wycliffe Hall	
																		Archaeology and Anthropology
•	•		•		•	•	•	•	•	•		•	•	•	•	•	•	Biochemistry (Molecular and Cellular)
•	•		•		•		•	•	•	•		•			•	•	•	Biological Sciences
	•		•		•	•	•	•	•					•				Biomedical Sciences
•	•		•		•	•	•	•	•	•		•	•	•	•	•	•	Chemistry
		•	•				•		•			•		•	•	•	•	Classical Archaeology and Ancient History
	•	•	•	•				•	•			•	•	•	•	•	•	Classics
	•	•	•					•	•				•		•	•	•	Classics and English
	•		•					•	•			•	•	•	•	•	•	Classics and Modern Languages
	•		•	•			•	•	•			•	•	•	•	•	•	Classics and Oriental Studies
			•		•			•	•					•		•	•	Computer Science
			•		•			•	•					•			•	Computer Science and Philosophy
					•	•		•	•	•				•			•	Earth Sciences (Geology)
•					•	•		•	•	•			•		•		•	Economics and Management
•			•		•	•		•	•	•			•	•	•	•	•	Engineering Science
•	•	•	•		•	•		•	•	•		•	•	•	•	•	•	English Language and Literature
•	•		•		•	•		•	•	•		•	•	•	•	•	•	English and Modern Languages
•	•		•		•	•		•	•	•		•		•	•	•	•	European and Middle Eastern Languages
	•		•		•	•		•	•								•	Fine Art
		•	•		•	•		•	•	•							•	Geography
•	•	•	•	•	•	•		•	•	•		•	•	•	•	•	•	History
	•	•	•	•			•	•	•			•	•	•	•	•	•	History (Ancient and Modern)
•		•	•		•	•			•	•		•			•	•	•	History and Economics
•	•	•			•		•	•	•	•		•			•		•	History and English
•	•		•		•	•		•	•	•		•	•	•	•	•	•	History and Modern Languages
•	•	•	•	•	•	•		•	•	•			•	•	•	•	•	History and Politics
					•				•	•					•	•	•	History of Art
					•			•	•						•		•	Human Sciences
•	•	•	•		•	•		•	•	•		•	•	•	•	•	•	Law (Jurisprudence)
•	•		•		•	•		•	•	•		•	•	•	•	•	•	Law with Law Studies in Europe
	•		•		•	•							•					Materials Science
•	•				•	•		•	•	•		•		•	•	•	•	Mathematics
			•		•			•	•			•		•	•	•	•	Mathematics and Computer Science
•	•		•		•	•		•	•	•		•	•	•	•	•	•	Mathematics and Philosophy
	•		•		•	•		•	•	•		•	•	•	•	•	•	Mathematics and Statistics
•	•		•		•	•		•	•	•		•	•	•	•	•	•	Medicine
•			•		•			•	•	•		•					•	Medicine (Graduate Entry)
•	•		•		•	•		•	•	•		•	•	•	•	•	•	Modern Languages
•	•		•		•	•		•	•	•		•	•	•	•	•	•	Modern Languages and Linguistics
•	•		•		•	•		•	•	•		•		•			•	Music
•	•		•	•					•					•	•			Oriental Studies
•	•		•		•	•		•	•	•		•	•	•	•	•	•	Philosophy and Modern Languages
•	•	•	•	•	•	•		•	•	•		•	•	•	•	•	•	Philosophy, Politics and Economics (PPE)
•		•		•					•	•	•		•			•	•	Philosophy and Theology
•	•		•		•	•		•	•	•		•	•	•	•	•	•	Physics
•	•				•	•		•	•	•		•	•	•	•	•	•	Physics and Philosophy
•	•		•		•	•		•	•	•		•		•	•	•	•	Psychology (Experimental)
•	•		•		•	•		•	•	•				•		•	•	Psychology, Philosophy and Linguistics
•		•		•					•	•	•		•			•	•	Theology and Religion
•		•		•						•							•	Theology and Oriental Studies

Check [ox.ac.uk/undergraduate/colleges/which\\_colleges\\_offer\\_my\\_course](https://www.ox.ac.uk/undergraduate/colleges/which_colleges_offer_my_course) for the latest information

# Choosing a college

**Most students love their college, and will tell you that theirs is the best.** All colleges have signed up to a Common Framework on Admissions which means the same application process for your course at every college. Whichever college you go to, you will be studying for the same degree at the end of your course.

## To choose...

You can't choose a college, though you can express a preference by entering a college campus code on your UCAS application. Each college is different so you may like to consider their:

- size and age
- location – how close to the city centre, your department, the park, the river, the sports centre
- accommodation – number of years of college accommodation, where it is, how much it will cost
- grants or other funding – as well as any support provided by the University
- facilities – all colleges have a library, dining hall and common room but other resources do vary (you can also use the University's facilities)
- access – most colleges have facilities and accommodation for disabled students; however, given the age of the buildings, some areas of some colleges are not accessible for students with mobility issues. See page 16 for further advice.

Even if you do specify a college, other colleges may also interview you, and any of them may offer you a place. In 2015, 33% of successful applicants got an offer from a college they didn't specify on their application.

## Or not to choose...

If you don't mind which college you go to, you can make an **open application** by choosing campus code 9 on your UCAS application. Your application will be assigned to a college or hall that has relatively fewer applications for your course in the year you apply. In 2015, 18% of applicants made an open application. Tutors have no preference for direct or open applications: they are looking for the best applicants for their course.

*Although I didn't actually apply to my college, I have absolutely fallen in love with it and couldn't be happier. It is so friendly and inclusive, and the other students are so incredibly diverse and interesting. There is a really strong support system, and I feel like I am truly part of a community in which we all look out for each other.*

*Izzy, 1st year*

*College pride is big, but it doesn't get in the way of intercollege friendships. I've never felt so welcomed and liked as I do at my college.*

*Tamsin, 2nd year*

See [www.ox.ac.uk/collegechoice](http://www.ox.ac.uk/collegechoice) for further information and a video on choosing a college.

For more student perspectives, read the *Alternative Prospectus* at [www.ousu.org](http://www.ousu.org).



## Balliol College, OX1 3BJ

[www.balliol.ox.ac.uk](http://www.balliol.ox.ac.uk)

+44 (0) 1865 277777

### UCAS campus code: O

#### Founded

1263

#### Student numbers

undergraduates 375

graduates 297

#### Admissions information

Admissions Administrator:

Victoria Holt

[admissions@balliol.ox.ac.uk](mailto:admissions@balliol.ox.ac.uk)

+44 (0) 1865 277748

The David Freeman Outreach and

Student Support Officer: Kate Kettle

[outreach@balliol.ox.ac.uk](mailto:outreach@balliol.ox.ac.uk)

+44 (0) 1865 277752

#### Open days

29 and 30 June and 16 September 2016

[www.balliol.ox.ac.uk/opendays](http://www.balliol.ox.ac.uk/opendays)

and

[ox.ac.uk/opendays](http://ox.ac.uk/opendays)



Balliol is one of the oldest and largest colleges. In the 19th century it led the University reforms that resulted in the selection of students solely on academic ability. This remains the cornerstone of the University's admissions policy: we are committed to attracting women and men of exceptional potential regardless of their social, cultural or educational background.

Our dynamic student community is drawn from a broad spectrum of schools within the UK, and also from elsewhere in the EU and overseas.

College life is subsidised in many ways but, in addition, eligible students can apply for a wide range of maintenance and hardship grants as well as special funds for research and travel.

Many prominent figures in public life have graduated from Balliol. The college has a reputation for academic excellence alongside a friendly atmosphere and lively spirit of intellectual debate.

#### Location

Balliol stands on Broad Street in the city centre, just metres from the Bodleian Library and a short walk or cycle ride from University academic departments. Its modern annexe is 5 minutes away on Jowett Walk.

#### Accommodation and meals

The majority of undergraduates can be housed in college rooms for the duration of their course, though many choose to live in private rented accommodation elsewhere in Oxford for their second year.

Student meals are served in hall and there is an optional pre-payment scheme which is very economical. There is also the Pantry in the Junior Common Room (JCR), a café serving food and drink at subsidised rates. There are self-catering kitchenettes on the main site and in the new buildings.

#### Facilities

Balliol has a large and well-stocked library (open 24/7), a law library and the Balliol Historic Collections Centre.

The college also has a music room, a computer room and a purpose-built theatre, the Michael Pilch Studio, as well as a gym and a range of sports facilities including a boathouse.

The chapel offers weekly services and a place for reflection to all.

#### Student societies

Balliol has one of the largest and arguably most active student bodies in the University, with a reputation for political and altruistic activism.

The centre of undergraduate life is the JCR, which organises lots of social events, as well as offering a student-run bar and the Pantry.

Students can get involved in many activities, including our non-auditioning choir, the annual charity musical, subject societies and other societies – such as the A&B, a light-hearted debating club – and a number of sports, from football and rowing to mixed lacrosse and ultimate frisbee.

What can you study  
at this college?

page 146



# Blackfriars

Permanent Private Hall

for students aged 21+ only



## Blackfriars, St Giles', OX1 3LY

www.bfriars.ox.ac.uk

+44 (0) 1865 278441

### UCAS campus code\*: P

#### Founded

1994

#### Student numbers

undergraduates 4

graduates 39

#### Admissions information

+44 (0) 1865 278441

admissions@bfriars.ox.ac.uk

Admissions Tutor:

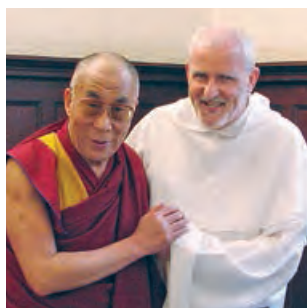
Revd Dr Simon Francis Gaine

#### Open days

29 and 30 June and 16 September 2016

ox.ac.uk/opendays

*\*If you choose this campus code when making your application we will contact you by email to confirm which hall you would like to apply to.*



Blackfriars is a small, supportive and international academic community which welcomes undergraduate and postgraduate students (aged 21 or above) from different backgrounds and religious traditions, all of whom value our distinctive ethos. Undergraduates may study Theology and Religion, Philosophy and Theology, Theology and Oriental Studies, or Philosophy, Politics and Economics.

Our academic study in Blackfriars Hall is informed by a common life of friendship alongside the Dominican friars of Blackfriars Priory, and those training for the priesthood in Blackfriars Studium. The Dominicans, a religious order of the Catholic Church, first came to Oxford in 1221 and returned in 1921.

The hall continues the Dominicans' historic mission to engage with contemporary thought by participation in the life and work of a modern university that is committed to excellence in teaching and research. Our Aquinas Institute specialises in the thought of St Thomas Aquinas and its modern relevance. The Las Casas Institute promotes critical reflection on questions of human dignity in the light of Catholic social teaching and theology. Our students enjoy access to special lectures by distinguished visitors and to conferences offered by the institutes.

### Location

Blackfriars is located on St Giles' in the city centre, with student accommodation in nearby St John Street, and offices in neighbouring Beaumont Street.

### Accommodation and meals

Accommodation in St John Street, with Wi-Fi, catering and laundry facilities, is guaranteed to all first-year undergraduates, and offered to others as available. Students are offered the opportunity to take meals at nearby partner colleges.

### Facilities

Our outstanding library of more than 35,000 volumes in philosophy and theology opens daily from 7.30am (8.30am at weekends) to 10pm. There is a Wi-Fi network and a computer suite. The Junior Common Room (JCR) offers a comfortable place to relax and socialise.

### Student societies

Blackfriars offers free membership of the University gym. There is an active Wine Society, and the Women's Group hosts speaker events. The JCR organises frequent social events. Highlights in Blackfriars' social calendar include the Thanksgiving Dinner, Advent Party, a reading week in the country, the Priory Dinner and a summer garden party. Students regularly combine with members of other colleges for sporting activities.

More on colleges:

[ox.ac.uk/ugcolls](http://ox.ac.uk/ugcolls)



# Brasenose



## Brasenose College, OX1 4AJ

www.bnc.ox.ac.uk  
+44 (0) 1865 277830

### UCAS campus code: V

#### Founded

1509

#### Student numbers

undergraduates 367  
graduates 209

#### Admissions information

+44 (0) 1865 277510  
admissions@bnc.ox.ac.uk  
schools@bnc.ox.ac.uk

#### Open days

29 and 30 June and 16 September 2016  
www.bnc.ox.ac.uk/open-days  
and  
ox.ac.uk/opendays



Brasenose is a friendly and diverse community, with a strong tradition of academic excellence. Situated in the beautiful setting of Radcliffe Square, we are at the very heart of the University and the city. In accordance with the Common Framework on Admissions, Brasenose is committed to admitting the brightest and best students regardless of background, and creating an environment where individuals can flourish and realise their potential.

### Location

Brasenose College is the only undergraduate college on Radcliffe Square, near to the main University libraries, lecture theatres and other buildings, but also right next to the bustling High Street. We also have accommodation at the Frewin Hall complex, which is a 5-minute walk from the main site and also in the centre of the city.

### Accommodation and meals

Brasenose is able to accommodate undergraduates for all years of study. First years live together on the main site, second years normally live in the nearby Frewin complex, and there is accommodation for later-year students on both sites. All our rooms are single, and have either a washbasin or full ensuite facilities. We have some rooms suitable for disabled students, and applicants with special requirements are welcome to contact us to discuss needs.

Brasenose enjoys a well-deserved reputation for delicious food. A full and affordable pay-as-you-go meal service

is provided in our splendid 16th-century dining hall. There is a popular recently refurbished café on the main site, and shared kitchens in the Frewin complex. Our lively bar is a fantastic place to relax and meet up with friends.

### Facilities

Brasenose has three excellent libraries open 24 hours a day. We offer free membership to the University's gym, and have our own sports ground (five minutes' cycle ride from college) where students play rugby, football and cricket, among other sports. There is also a well-equipped boathouse on the river. The college has music practice rooms, a large double common room with satellite TVs, newspapers, a pool and table tennis table, film library and Wii console, laundry facilities and a friendly porters' lodge staffed 24/7. Each bedroom has internet access, and there is a comprehensive college Wi-Fi network. The college offers grants to those wishing to stay during vacation: for course-related research and travel, to support extra-curricular activities, and to aid those in unexpected financial hardship.

### Student societies

The college has a strong tradition in drama and music and there is an annual week-long summer arts festival featuring student-produced plays, concerts, film nights, exhibitions, a cabaret, a bake-off and more. We have an energetic choir and numerous sports teams, plus a range of other social, cultural and sporting activities, where all levels are catered for.

What can you study at these colleges?  
page 146





# Christ Church



## Christ Church, OX1 1DP

www.chch.ox.ac.uk  
+44 (0) 1865 276150

### UCAS campus code: 2

#### Founded

1546

#### Student numbers

Undergraduates 429

Graduates 174

#### Admissions information

www.chch.ox.ac.uk/  
prospectus-2015-2016  
+44 (0) 1865 276181, 276196  
admissions@chch.ox.ac.uk

Tutor for Admissions:  
Professor Joseph Schear

#### Open days

29 and 30 June and 16 September 2016

www.chch.ox.ac.uk/admissions/  
important-datesopen-days  
and

ox.ac.uk/opendays



Many different kinds of people, from various backgrounds, come to Christ Church. We are one of the larger colleges and can offer places for most undergraduate courses. The result is a diverse, vibrant and active academic community.

In line with the University's admissions policy, we select solely on academic ability and potential. The college is committed to widening participation: attracting talented students whatever their background.

Christ Church is sensitive to the growing financial costs associated with a university education. We are in the fortunate position of being able to offer generous support in addition to the financial package provided by the University. This means that no student with the ability and potential to study at Oxford should be deterred from making an application to us on financial grounds.

### Location

Christ Church is on St Aldate's, close to the Bodleian Library and other University facilities, and next to Christ Church Meadow with its peaceful river walks.

### Accommodation and meals

All Christ Church students live in college rooms throughout their course. Most rooms are on the main site, in spacious modernised buildings built over five centuries. About 60 students live nearby in modern self-catering flats. One flat is equipped for up to three disabled residents, and two single rooms for disabled students are also available on the main site. A full service of varied and

high-quality meals is provided in the hall, and we aim to cater for all special diets.

### Facilities

Our magnificent 18th-century library, one of the largest in Oxford, aims to supply everything undergraduates need for their courses and responds to many requests for new purchases; there is also a specialised law library. We have two well-equipped computer rooms and there is Wi-Fi available throughout the college, including in students' rooms.

The common room has table tennis and pool tables, and a widescreen TV with satellite channels and a DVD player. The college has a music room, art gallery and art room, where the art tutor offers classes and organises visits, discussions and video displays.

### Student societies

Our student societies cater for a wide range of interests, and the college sports ground has excellent facilities for sports of all sorts for everyone, whether highly skilled or merely enthusiastic. The drama society puts on regular productions and encourages participation in and out of college. Music flourishes, with an orchestra, choir and other ensembles, as well as the renowned Christ Church Cathedral Choir. Those with contemporary musical interests can showcase their talents at the termly open mic night. A number of subject-based societies arrange dinners, speakers and discussions.

More on colleges:  
[ox.ac.uk/ugcolls](http://ox.ac.uk/ugcolls)



# Corpus Christi



## Corpus Christi College, OX1 4JF

www.ccc.ox.ac.uk  
+44 (0) 1865 276700

**UCAS campus code: 3**

### Founded

1517

### Student numbers

undergraduates 249  
graduates 95

### Admissions information

+44 (0) 1865 276693  
admissions.office@ccc.ox.ac.uk  
Tutor for Admissions:  
Professor Pawel Swietach  
Outreach Officer and Admissions  
Administrator: Brendan Shepherd

### Open days

29 and 30 June and 16 September 2016  
www.ccc.ox.ac.uk/open-days  
and  
ox.ac.uk/opendays



Boasting a strong sense of community and a friendly atmosphere, Corpus Christi is one of Oxford's older and smaller colleges. It prides itself on the diversity of its students' backgrounds, with a strong tradition of openness, tolerance and fairness. All this helps to make the college unusually well integrated and supportive.

### Location

Corpus is 5 minutes' walk from the city centre and Bodleian Library, and only 10 minutes from the arts faculties and science laboratories, but is tucked away from the noise of the city, looking out over Christ Church Meadow towards the river.

### Accommodation and meals

The college offers all its students a room for the normal duration of their course. Usually, first-year students live in college. Students in other years can live on the main site or close by. The Liddell Building and recent Lampl Building, about 15 minutes away from the college, have shared flats with communal kitchens and dining areas. Some rooms have their own ensuite shower and WC. There is also accommodation for students with mobility difficulties.

### Facilities

The magnificent 16th-century Old Library and its trilingual collection of books was described by the humanist Erasmus as a wonder of the world, and is still used by students today. With more than 60,000 books, 24-hour opening, computerised catalogues, numerous PC

workstations and the provision of colour printing, scanning and photocopying, it is a convenient as well as a beautiful place to work.

Wired and wireless internet access is available throughout the college's main site, including the library and all student bedrooms, and all annexe locations (including the Liddell and Lampl Buildings). The well-equipped computer suite has eight PCs and a large multi-functional device for colour printing, scanning and photocopying.

The college has a multi-purpose auditorium suitable for concerts, drama productions, parties and lectures. We have an ecumenically progressive chapel whose lively choir has travelled the world. Students have access to a sports field and boathouse, as well as the beer cellar, TV rooms and Junior Common Room (JCR).

Due to the age of the buildings, some areas within the college pose access challenges for students with mobility difficulties.

### Student societies

Among the most active of our many clubs are the dramatic society – the Owlets – and the choir. There are plenty of sporting opportunities too, always undertaken enthusiastically. The college has an impressive social calendar with an inexpensive ball every other spring and a fair each June, which features our famous tortoise race. The effective JCR, represented on most committees, is active at open days, in access activities, and – of course – in the beer cellar.

What can you study  
at these colleges?  
page 146



## Exeter College, OX1 3DP

www.exeter.ox.ac.uk

+44 (0) 1865 279600

**UCAS campus code: 4**

### Founded

1314

### Student numbers

undergraduates 319

graduates 185

### Admissions information

+44 (0) 1865 279661

admissions@exeter.ox.ac.uk

schools.liason@exeter.ox.ac.uk

### Open days

29 and 30 June and 16 September 2016

www.exeter.ox.ac.uk/

prospectivestudents/undergraduate/

opendays

and

ox.ac.uk/opendays



Visual impression of Cohen Quad  
© Alison Brooks Architects

Exeter, Oxford's fourth-oldest college, has a close – but not claustrophobic – community, and there is a caring atmosphere where people look out for others.

Uniquely, the college has its own careers advice office which offers internships with employers. It also has a distinctive programme of in-house seminars by prominent public figures: Philip Pullman, JK Rowling, film producer Sir Peter Jackson and Sir Paul Nurse have spoken recently. Former undergraduates include JRR Tolkien, Imogen Stubbs, Alan Bennett, Sir Ronald Cohen, Reeta Chakrabarti and Sir Roger Bannister. Exeter offers financial aid for student hardship and encourages strong international links: in addition to its above-average proportion of students from overseas, the college hosts 26 visiting students from Williams College in Massachusetts.

### Location

Exeter is in the centre of Oxford, close to the main libraries, lecture theatres and departments (as well as to shops and pubs).

### Accommodation and meals

Students can have three years' accommodation in Exeter-owned rooms. All first years live on the main college site in Turl Street, and about half of our students get another year here. Other college accommodation is in vibrant east Oxford and the new Cohen Quad just a few minutes' walk away in fashionable Jericho. We hope to be able to offer rooms to all students who require a

fourth year of college accommodation. All rooms have fast internet connections. Wherever students live, three meals a day can be taken in hall during term; annexes also have self-catering facilities.

### Facilities

The library is generously funded and open for reading and borrowing 24 hours a day during term, with long hours in vacations. It has 40,000 volumes on open shelves and as many again in the stack. Most first years will find many of their books in the library, but students are also encouraged to suggest purchases. Computer rooms, with printers, are provided on site.

Exeter students enjoy one of the most beautiful gardens in Oxford, with views over Radcliffe Square.

### Student societies

Exeter students participate in a wide variety of student societies, both in college and for the University. Exeter has a strong musical tradition: the excellent mixed choir sings in chapel, and the musical society supports everything from jazz through folk to classical. The bar is a popular venue for rock, folk, jazz and blues. The JCR (Junior Common Room) is a hub of social activity.

Exeter has many sports teams, a small gym and weights room on site, a sports ground and a boathouse on the Thames. Exonians, as Exeter College students are called, have had much sporting success, but most play for fun and exercise: it's not compulsory!

More on colleges:  
[ox.ac.uk/ugcolls](http://ox.ac.uk/ugcolls)



## Harris Manchester College, OX1 3TD

[www.hmc.ox.ac.uk](http://www.hmc.ox.ac.uk)

+44 (0) 1865 271006

**UCAS campus code: 6**

### Founded

1786

### Student numbers

undergraduates 82

graduates 123

### Admissions information

+44 (0) 1865 271009

[admissions@hmc.ox.ac.uk](mailto:admissions@hmc.ox.ac.uk)

### Open days

29 and 30 June and 16 September 2016

[ox.ac.uk/opendays](http://ox.ac.uk/opendays)



Harris Manchester is the only Oxford college which is dedicated solely to mature students (21+ with no upper age limit). As the smallest college in the University it has an intimate, friendly atmosphere, with a great deal of peer support. The diversity of our students in terms of age, culture and background makes the college a very interesting and vibrant society.

The college has a number of scholarships for second undergraduate degrees, up to £18,000 in total, which are awarded on merit. All second BA applicants are automatically considered.

### Location

Harris Manchester is centrally situated in a quiet location on Mansfield Road, just a few minutes away from the Bodleian Library, most faculty libraries, the Science Area and other University facilities.

### Accommodation and meals

College accommodation is on the main site and students are generally accommodated in college for at least the first and final years of their course. We are unable to provide accommodation for couples and families. All rooms are wired for the internet. There is a mix of modernised 16th- and 17th-century houses, and some new improved accommodation built in a classical style, including a recently completed clock tower. The charges for living in college include meals, which are of a consistently high quality; care is taken to cater for specific dietary requirements.

### Facilities

The library has some 70,000 volumes. The reading room, the Tate Library, is open to students 24 hours a day during normal term time. It covers all undergraduate subjects that the college offers and has a generous budget. The college gives a book grant to each student. There is a student computing room and a high level of IT support.

### Student societies

College life from year to year is very dependent on the interests of current students, and so there is a great opportunity for each individual to influence college life. The college has a flourishing law society and wine society. There is a vibrant and socially active student community which reflects the sporting and cultural interests of the college. We join forces with the Wadham rowing team. There is also a college choir, and music has become an important part of college life.

What can you study  
at these colleges?

page 146



## Hertford College, OX1 3BW

[www.hertford.ox.ac.uk](http://www.hertford.ox.ac.uk)

+44 (0) 1865 279400

### UCAS campus code: 7

#### Founded

1282

#### Student numbers

undergraduates 394

graduates 189

#### Admissions information

+44 (0) 1865 279404

[undergraduate.admissions@hertford.ox.ac.uk](mailto:undergraduate.admissions@hertford.ox.ac.uk)

Senior Tutor:

Professor Charlotte Brewer

Admissions Officer: Lisa Atkinson

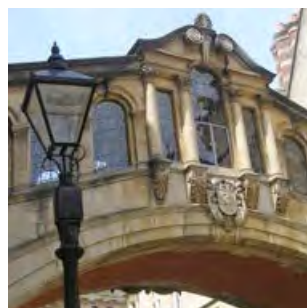
#### Open days

29 and 30 June and 16 September 2016

[www.hertford.ox.ac.uk/discover-hertford/undergraduates/hertford-open-days/open-day-details](http://www.hertford.ox.ac.uk/discover-hertford/undergraduates/hertford-open-days/open-day-details)

and

[ox.ac.uk/opendays](http://ox.ac.uk/opendays)



Hertford is known for its friendly atmosphere, welcoming students wherever they come from: you don't have to be any particular type to fit in. We value our informal, progressive climate, which we believe fosters good, positive working relationships between tutors and students.

### Location

Hertford is in quiet Catte Street, opposite the Bodleian Library and right in the city centre.

### Accommodation and meals

All first years live on the main site in Catte Street surrounded by some of the most beautiful buildings in Oxford. Students in other years live in Warnock or Abingdon House (both purpose built and close to the river and Christ Church Meadow), or in north Oxford, all about ten minutes' walk away. We offer you a room for the full duration of your course and all student rooms have internet connections, telephones and small shared kitchens. There is cafeteria service in college and at Warnock House (for certain meals) and there are also opportunities for formal dining. You are charged only for the meals you take; there is no standing charge.

### Facilities

The college library is open 24 hours a day. Its working stock is on open shelves and covers all degree subjects taken in college. There is no limit on the number of books students can borrow and requests for new books are welcome. All desks have internet connections

and the library has its own computer room.

The well-equipped Junior Common Room (JCR) has two computer rooms and there are additional computing facilities at Warnock and Abingdon House.

The college has a gym, a music room and an attractive and comfortable bar. Off site we have sports grounds, tennis and squash courts and a superb boathouse.

### Student societies

Hertford's students are diverse and passionate about their various interests, so we have societies for everything from business and economics to ultimate frisbee. We are strong in music-making of all kinds, with an orchestra, choir and jazz band. Our boathouse provides excellent facilities for novice and experienced oarsmen and -women, and we compete successfully in the full range of major sports. Many subjects also have their own societies that meet to hear specialist speakers or just to enjoy one another's company.

More on colleges:

[ox.ac.uk/ugcolls](http://ox.ac.uk/ugcolls)



# Jesus College



## Jesus College, OX1 3DW

www.jesus.ox.ac.uk  
+44 (0) 1865 279700

### UCAS campus code: Q

#### Founded

1571

#### Student numbers

undergraduates 331  
graduates 190

#### Admissions information

+44 (0) 1865 279721  
admissions.officer@jesus.ox.ac.uk  
Admissions Officer: Geoff Anslow  
Access Fellow: Beth Mortimer

#### Open days

29 and 30 June and 16 September 2016  
www.jesus.ox.ac.uk/admissions/  
open-days  
and  
ox.ac.uk/opendays



Jesus College is renowned for its close-knit community where academic excellence is central to college life. We aim to offer our students the best possible education and opportunities during their time here, and as a result we have recently been voted best college for student satisfaction. Each year we award a large number of scholarships, prizes and grants to recognise achievement and progress, and to support music, sports and travel.

The college has always had Welsh connections, though our students now come from all over the UK and other countries.

### Location

Jesus College is in Turl Street, right in the heart of Oxford, close to the main libraries and within easy walking distance of the Science Area, shops, cinemas and theatres.

### Accommodation and meals

Jesus College guarantees full accommodation for all its undergraduates. First years have rooms in central Oxford, living in our historic Turl Street site or in the new Ship Street Centre. Over two-thirds of the rooms are ensuite. After that, most students live in college flats, either to the north (near the Science Area) or to the east (by our sports ground) of Oxford city centre. These high-quality flats have three/four bedrooms, a kitchen, sitting room and bathroom, for reasonable cost. Meals in hall are popular and food is charged on a pay-as-you-go basis to the termly bill, so students can choose whether to eat in

hall or not. Gowns are not required for evening meals.

### Facilities

The college library and well-equipped computer suite are open 24 hours a day. Wi-Fi is available in all accommodation, libraries, common rooms and seminar rooms.

The Junior Common Room (JCR) boasts a conservatory, as well as newspapers, magazines, refreshments, widescreen TV and ping-pong and pool tables. The popular college bar, Fourth Quad, is open in the evenings. The college also has a music room with piano and a dark room. Our large sports pavilion doubles as an entertainment venue and we have playing fields, squash courts and a boathouse. Our students have free membership of the University gym and pool. We welcome students with disabilities: please see our access guide at [www.jesus.ox.ac.uk/admissions/disability-support](http://www.jesus.ox.ac.uk/admissions/disability-support) and contact us before applying to discuss your needs.

### Student societies

The JCR Arts Fund supports the dramatic society to facilitate student productions. Jesus College students jointly organise the lively Turl Street Arts Festival. Thriving subject societies (from English to Physics) arrange formal and informal events. The chapel choir regularly leads Evensong, gives concerts and goes on tours. The college is very active in many sports, either competitively or just for fun.

What can you study  
at these colleges?  
page 146



# Keble



## Keble College, OX1 3PG

[www.keble.ox.ac.uk](http://www.keble.ox.ac.uk)

+44 (0) 1865 272727

### UCAS campus code: A

#### Founded

1870

#### Student numbers

undergraduates 417

graduates 232

#### Admissions information

[www.keble.ox.ac.uk/admissions](http://www.keble.ox.ac.uk/admissions)

+44 (0) 1865 272708

[admissions@keble.ox.ac.uk](mailto:admissions@keble.ox.ac.uk)

Senior Tutor: Dr Alisdair Rogers

Admissions Officer: Vicky Archibald

Outreach Officer: Boriana Boneva

#### Open days

29 and 30 June and 16 September 2016

[www.keble.ox.ac.uk/admissions/](http://www.keble.ox.ac.uk/admissions/undergraduate/open-days)

[undergraduate/open-days](http://www.keble.ox.ac.uk/admissions/undergraduate/open-days)

and

[ox.ac.uk/opendays](http://ox.ac.uk/opendays)



Keble College was established to extend access to Oxford University, and it remains true to that founding vision.

The college's central aim is to foster the highest academic achievement for all its students, from all backgrounds and every corner of the globe. We strive to provide a supportive environment in pursuit of this aim.

The college has also developed a strong programme of financial support for students through prizes, academic scholarships and grants, as well as bursaries.

#### Location

The college is adjacent to the University Parks, between the Science Area and the new Radcliffe Observatory Quarter. The main libraries are close by and the city centre is 5 minutes' walk away.

#### Accommodation and meals

Keble normally offers rooms to all students in their first two years and to most in their third year within the main college site. We believe we have some of the best college accommodation in Oxford. Our 360 rooms are well furnished and 250 have their own shower and WC; the others have washbasins, with adjacent toilets and shower rooms. There are internet connection points in every room and wireless access throughout most buildings. The college retains the custom of dining in one sitting, with waiter service, each night except Saturday, which makes the experience in our magnificent hall all the more special and important for Keble's great sense of

community. Café Keble (pictured) offers drinks and light bites during term and is a great place to socialise or study.

#### Facilities

The library has over 100 work spaces, is open 24/7, and prides itself on a helpful and efficient service. Keble is also home to the Advanced Studies Centre, which fosters interdisciplinary research and hosts frequent talks by world experts. The college has one of Oxford's newest and best-equipped theatres, the O'Reilly, which runs productions each term. We have a well-equipped gym and a sports ground and squash courts within easy reach, and we also use parts of the nearby University Parks.

#### Student societies

Keble is large and diverse enough to host societies and clubs of every description. Keble's music society and chapel choir are among the best in the city. There is also a strong drama society which helps to run the O'Reilly theatre. Our students organise and run an annual Arts Week, which showcases both the visual and performing arts and includes very popular stand-up comedy and poetry nights. Sport also plays a role in college life, with teams catering for all levels of experience and commitment. At the upper level, many Keble teams make the top division and compete in intercollegiate sporting competitions.

More on colleges:  
[ox.ac.uk/ugcolls](http://ox.ac.uk/ugcolls)



# Lady Margaret Hall



## Lady Margaret Hall, OX2 6QA

[www.lmh.ox.ac.uk](http://www.lmh.ox.ac.uk)

+44 (0) 1865 274300

**UCAS campus code: B**

### Founded

1878

### Student numbers

undergraduates 395

graduates 205

### Admissions information

+44 (0) 1865 274310

[admissions@lmh.ox.ac.uk](mailto:admissions@lmh.ox.ac.uk)

### Open days

29 and 30 June and 16 September 2016

[www.lmh.ox.ac.uk/prospective-students/Undergraduates/](http://www.lmh.ox.ac.uk/prospective-students/Undergraduates/Open-days.aspx)

[Open-days.aspx](http://www.lmh.ox.ac.uk/prospective-students/Undergraduates/Open-days.aspx)

and

[ox.ac.uk/opendays](http://www.lmh.ox.ac.uk/opendays)



Our students enjoy all the benefits of a traditional Oxford education within a warm, open and informal environment. We have almost equal numbers of men and women among our tutors, our undergraduates and our graduates. Our students work with internationally distinguished scholars who are dedicated to tutorial teaching and to welfare support. Bursaries, academic awards and scholarships are available to enable hard-working students to achieve their academic potential. We are accessible to those with mobility problems. LMH has an exceptionally beautiful site with gardens which run down to the river.

### Location

We are beside the University Parks, a 5-minute walk to the Science Area and about 15 minutes on foot (5 minutes by bicycle) from the city centre.

### Accommodation and meals

Undergraduates are guaranteed a room on the college site for three years of their course. Some rooms are unusually large, and the majority are ensuite; all have wireless internet connections. There is purpose-built accommodation for physically disabled students. Our dining hall serves a wide menu on a buffet basis and there are opportunities for formal meals alongside more informal gatherings. We are proud of the quality of our food and are distinctive in having a large number of student kitchens and kitchenettes so that all students can also cook and prepare their own food for themselves and their friends.

### Facilities

Our college library is a lovely place to study. It has separate secluded bays as well as common tables. We have a generous stock of books and research materials that is matched closely to the requirements of our students' courses. The library and its resources are always available: open 24/7, with most materials on open shelves, and a self-checkout system. There is a computer room, and students can bring laptops into the library for their work. We designate a brainstorming room for students to talk about work outside the library.

We have a lecture theatre which is available for student theatre and musical performances. It is an adaptable space used for lectures, films and ceremonies. We have music practice rooms, a gym, tennis courts, playing fields and a boathouse with its own punts. Our buildings house a purpose-built undergraduate common room, and our bar has a games room and an outside terrace.

### Student societies

LMH students are active in a wide variety of societies, sports (competitive and recreational), cultural and community activities. We enjoy excellent facilities and it is easy to get involved or to start new activities at LMH and to find others to join in.

What can you study at these colleges?

page 146





## Lincoln College, OX1 3DR

[www.lincoln.ox.ac.uk](http://www.lincoln.ox.ac.uk)

+44 (0) 1865 279800

### UCAS campus code: C

#### Founded

1427

#### Student numbers

undergraduates 301

graduates 289

#### Admissions information

+44 (0) 1865 279836

[admissions@lincoln.ox.ac.uk](mailto:admissions@lincoln.ox.ac.uk)

[schools.liason@lincoln.ox.ac.uk](mailto:schools.liason@lincoln.ox.ac.uk)

#### Open days

29 and 30 June and 16 September 2016

[www.lincoln.ox.ac.uk/Open-Days](http://www.lincoln.ox.ac.uk/Open-Days)

and

[ox.ac.uk/opendays](http://ox.ac.uk/opendays)



Lincoln, one of the smaller undergraduate colleges in Oxford, combines intimacy with a strong academic tradition. Its strength is the personal relationship between tutors and students built by the tutorial system. There is also a genuine atmosphere of good humour, hard work and mutual support.

The college can offer a number of generous bursaries for students from low-income backgrounds, in addition to University support. There are also prizes and scholarships for outstanding academic work, grants for books, a number of bursaries for travel and project work in vacations, and some discretionary funds for unexpected financial difficulty.

### Location

Lincoln is in the city centre, on Turl Street between the High Street and Broad Street. The college was founded in the 15th century and the main site retains its medieval character. Lincoln has also converted other properties nearby for accommodation and teaching.

### Accommodation and meals

Undergraduates are guaranteed college-owned accommodation for the three or four years of their course. All rooms have washbasins or ensuite facilities and an internet connection. First- and second-year students usually live in the old part of college and in Turl Street. Third- and fourth-year students are usually accommodated a few streets away, close to the Science Area, or opposite the college on the High Street. Our food is widely regarded as excellent and the

15th-century hall provides a popular focus for college life. Three meals are served in hall every day during term time. Lincoln's attractive cellar bar serves light lunches and coffee.

The college has one of the most beautiful libraries in Oxford, in what was All Saints Church – a fine, early-18th-century building now sensitively restored as a fully equipped modern library with more than 80 reading desks. Students have their own well-equipped computer room and each undergraduate is given a generous free printing allowance. The college has a comprehensive Wi-Fi network. Lincoln has a sports field and boathouse, and all students currently have free membership of the University gym and swimming pool.

### Student societies

There are college teams in most sports and several active student societies. Drama and music are strong, and each year the Turl Street Arts Festival provides a special focus for a wide range of arts events organised by members of the college. The fine chapel choir (which has recorded several CDs) performs throughout the term and undertakes tours in the UK and abroad. Much social life is focused on the Junior Common Room (JCR) and cellar bar. A Lincoln ball is held in alternate years.



# Magdalen



## Magdalen College, OX1 4AU

www.magd.ox.ac.uk  
+44 (0) 1865 276000

### UCAS campus code: D

#### Founded

1458

#### Student numbers

undergraduates 396  
graduates 179

#### Admissions information

+44 (0) 1865 276063  
admissions@magd.ox.ac.uk

#### Open days

29 and 30 June and 16 September 2016  
www.magd.ox.ac.uk/studying-here/  
as-an-undergraduate/open-days-  
and-visits  
and  
ox.ac.uk/opendays



Magdalen (pronounced 'Maudlen') has some of the most beautiful buildings in Oxford, new as well as ancient. It is set in 100 acres of grounds which include the Deer Park and Addison's riverside walk. Magdalen's spaciousness has helped to determine its character – diversified, informal and without pressure to conform to any stereotype or set of views. Students are represented on the key committees which run the college. The atmosphere is relaxed, but with unambiguous ambitions towards academic and extra-curricular success.

Every year we aim to admit 118 undergraduates who demonstrate academic talent and commitment, entirely on merit and irrespective of social or ethnic background, in accordance with the University's admissions policy. We welcome applications from students with disabilities. Magdalen is able to provide for students who run into financial problems. There are large numbers of travel and research grants every year, as well as annual tutorial prizes for the most promising and successful of our students.

### Accommodation and meals

All undergraduates can live in college for the entire duration of their course, whether three years or four. Many college rooms have superb views, and all have access to bathroom facilities nearby. Every room has internet access, a telephone and a mini fridge. Meals are available at competitive prices in the dining hall or in the 14th-century Old Kitchen Bar which acts as an ideal social centre shared by everyone: students, tutors and college staff.

### Facilities

There are 100,000 volumes spread among the college's five libraries, with the main ones open 24 hours a day. There is a large DVD collection, with an emphasis on modern language classics of cinema. The musical and theatrical lives of the college are particularly strong and the college auditorium seats up to 160 people and has superb studio acoustics. We possess two music practice rooms and a dedicated modern languages room. Our computer facilities for students are excellent. We have our own professionally maintained grounds for football, rugby, cricket and hockey as well as nine tennis courts, our own squash courts and an all-weather pitch (all on site), as well as an extremely well-equipped boat club.

### Student societies

Drama thrives. The Magdalen Players are renowned for their many high-class productions. Musical opportunities abound – as well as the famous Magdalen Choir and the Magdalen Orchestra, student bands and jazz groups are active. College societies cater for all interests, eg poetry, films and debating. Football, hockey, lacrosse, netball, swimming, rugby and cricket are very popular at all levels. Rowing – men's and women's – is traditionally strong.

What can you study  
at these colleges?  
page 146



# Mansfield



## Mansfield College, OX1 3TF

[www.mansfield.ox.ac.uk](http://www.mansfield.ox.ac.uk)

+44 (0) 1865 270999

**UCAS campus code: E**

### Founded

1886

### Student numbers

undergraduates 222

graduates 122

### Admissions information

+44 (0) 1865 282920

[admissions@mansfield.ox.ac.uk](mailto:admissions@mansfield.ox.ac.uk)

### Open days

29 and 30 June and 16 September 2016

[www.mansfield.ox.ac.uk/prospective/opendays.html](http://www.mansfield.ox.ac.uk/prospective/opendays.html)  
and

[ox.ac.uk/opendays](http://ox.ac.uk/opendays)



Mansfield is one of the smaller colleges, and we provide a supportive environment in which our students can excel academically. All our first-year undergraduates attend an induction programme before they begin their course, where they receive guidance about how to get the most out of their time at university.

Throughout its history Mansfield has worked hard to make an Oxford education available to previously under-represented groups. Our proportion of students from the state sector is the highest among Oxford colleges. As well as outreach work with our link regions in Greater London and Yorkshire, Mansfield runs events specifically for colleges of further education and sixth form colleges.

### Location

Mansfield occupies one of the best sites in Oxford, a short walk away from the Science Area and University libraries and close to the city centre but in a quiet position near the University Parks.

### Accommodation and meals

All first years are accommodated on site. Finalists are either on site, or in college-run accommodation a 15-minute walk away. Second years currently rent private houses, but Mansfield hopes to have completed a building project on site by summer 2017, which would mean our undergraduates would no longer need to rent privately. Most undergraduates living on site have ensuite facilities, but there are also more spacious rooms, with shared bathrooms, in the older part of

college. All rooms have telephone and internet connections. The dining hall provides some of the best food in the University at reasonable prices and in impressive surroundings, and the Crypt café with bar and terrace offers a more informal eating space.

### Facilities

The well-stocked library is a beautiful wood-panelled room in a quiet area of college, with three other separate libraries for Theology, Geography, Law and History, all open 24 hours a day. Mansfield is fortunate to share Merton's sports grounds, just a few minutes' walk from the college, with tennis and squash courts, and free gym membership for all students. We have a very sociable college cat.

### Student societies

Student societies depend on the interests of current students, but established societies include a very popular film club, evening discussion groups, thriving subject societies such as geography and law societies, and regular events to encourage and celebrate the achievements of women in the college. Mansfield is among the leading colleges for involvement in student journalism. The chapel is available for music practice and holds regular lunchtime recitals, and there is an active college choir. Our small size makes it very easy to be involved in a wide range of sports teams, including netball, football and cricket, and many of our students try rowing for the first time when they come to Mansfield.

More on colleges:  
[ox.ac.uk/ugcolls](http://ox.ac.uk/ugcolls)



## Merton College, OX1 4JD

www.merton.ox.ac.uk  
+44 (0) 1865 276310

### UCAS campus code: F

#### Founded

1264

#### Student numbers

undergraduates 291  
graduates 279

#### Admissions information

+44 (0) 1865 286316  
undergraduate.admissions@merton.  
ox.ac.uk  
schools@merton.ox.ac.uk

#### Open days

29 and 30 June and 16 September 2016  
www.merton.ox.ac.uk/undergraduate/  
open-days-school-visits#open  
and  
ox.ac.uk/opendays



Merton is one of the oldest and most beautiful colleges in Oxford with medieval and 17th-century buildings and a fine garden protected by the city wall. Merton has a strong sense of community with a lively and stimulating atmosphere. As with other colleges, we have a strong ethos of widening participation and are keen to attract talented applicants, whatever their background.

### Location

Merton overlooks meadows stretching down to the River Thames, yet it is in a quiet cobbled street just off the High Street, close to the University libraries, lecture rooms and departments. The Holywell Street annexe is within a few minutes of the Science Area.

### Accommodation and meals

Undergraduates can live in college-owned accommodation for their whole course, whether for three or four years. First years live in houses on Merton Street or on the main college precinct, while second years live in college-owned houses in Holywell Street, just 7 minutes from Merton Street; final years generally live on the main site. Many rooms have a private shower or bath, and two rooms are accessible for students with disabilities. All accommodation has Ethernet and Wi-Fi access.

Merton's hall food is among the tastiest and best value in the University and is charged on a pay-as-you-go basis. There are student kitchens on the main site and in each of the properties on Holywell Street. We are happy to discuss

any particular access or dietary requirements.

### Facilities

Students have a choice of workspace in the college – the well-stocked lending library, which contains 80,000 volumes, and a separate reference library. The medieval Old Library houses a significant collection of early books and is the oldest library in Britain in daily use.

Merton's facilities include a TV room, bar and laundry. The college gym is on the main site, while a boathouse and sports ground (with playing fields, pavilion and tennis and squash courts) are nearby. There is an active Junior Common Room (JCR) which organises social events. The magnificent chapel holds regular services and is also used for concerts and plays. A music practice room and the state-of-the-art TS Eliot Lecture Theatre can be booked by students.

Merton is also able to provide generous financial support in the form of various grants to assist in purchasing books, travel in connection with study, etc.

### Student societies

There are plenty of opportunities for students to pursue their interests, including drama, debating and art as well as a wide range of sports. The chapel choir has a strong reputation, and a number of choral scholarships are available, while other choirs and bands cater for wider musical interests. For more information, see [www.mertonjcr.org](http://www.mertonjcr.org).

What can you study at these colleges?  
page 146



# New College



## New College, OX1 3BN

[www.new.ox.ac.uk](http://www.new.ox.ac.uk)

+44 (0) 1865 279555

**UCAS campus code: G**

### Founded

1379

### Student numbers

undergraduates 430

graduates 279

### Admissions information

+44 (0) 1865 279512

[admissions@new.ox.ac.uk](mailto:admissions@new.ox.ac.uk)

Access and Admissions Administrator:  
Freyja Madsen

### Open days

29 and 30 June and 16 September 2016

[www.new.ox.ac.uk/](http://www.new.ox.ac.uk/visits-and-open-days)

[visits-and-open-days](http://www.new.ox.ac.uk/visits-and-open-days)

and

[ox.ac.uk/opendays](http://ox.ac.uk/opendays)



New College is one of the largest, most famous and architecturally striking colleges, with beautiful large gardens, excellent facilities and a variety of modern and old buildings. The college has a distinguished musical tradition: our choir is world famous and our musical life (from 14th-century choral music to 21st-century jazz) is extraordinary. The atmosphere in college is relaxed, friendly and open, and we are proud of our actively engaged and diverse student body.

### Location

The New College site is both quiet and central, close to many faculties, departments and libraries as well as shops, cinemas, cafés and clubs.

### Accommodation and meals

We are able to provide accommodation in or close to college for all undergraduate students in their first, second and fourth years. A number of third-year undergraduates can also be accommodated. Our rooms are single study bedrooms, with internet access; most are ensuite, some with shared bathrooms. Breakfast, lunch and dinner are served in hall during term. Some self-catering kitchens and kitchenettes are also available for student use. The college aims to accommodate students with disabilities, and such applicants are encouraged to contact the college to discuss their needs.

### Facilities

The college library has plenty of work space, and is open until midnight during term time. There are up-to-date books for all courses with more than 100,000 volumes available, 70% of which are on open shelves. There are excellent IT facilities with internet connections in all college accommodation. The JCR computer room has workstations with printers and scanners, and there is wireless access across the college. We have several music practice rooms with pianos and a band room with a drum kit, keyboard, amplifiers, microphones, decks and a PA system.

New College has its own sports ground and pavilion close to the main college site with pitches for rugby, football and hockey, two squash courts, and an all-weather court for netball and basketball. There is also a cricket pitch, grass and hard tennis courts and a boathouse on the banks of the River Thames, along with a number of college punts.

### Student societies

New College fosters individuality in its students, but they are also encouraged to get together so that societies flourish. Several drama groups put on productions each year, while music is a college passion too. There are chamber and choral groups of many sizes, as well as a college orchestra. Furthermore, we cater for jazz and non-classical musicians. We keep up high levels in sport and field many teams and boats. Our female athletes have been especially successful in recent years.

More on colleges:  
[ox.ac.uk/ugcolls](http://ox.ac.uk/ugcolls)



## **Oriel College, OX1 4EW**

[www.oriel.ox.ac.uk](http://www.oriel.ox.ac.uk)

+44 (0) 1865 276555

**UCAS campus code: H**

### **Founded**

1326

### **Student numbers**

undergraduates 325

graduates 186

### **Admissions information**

+44 (0) 1865 276522

[admissions@oriel.ox.ac.uk](mailto:admissions@oriel.ox.ac.uk)

Admissions Officer: Joseph Cole

Outreach Officer: Emma Bausch

### **Oxford Open days**

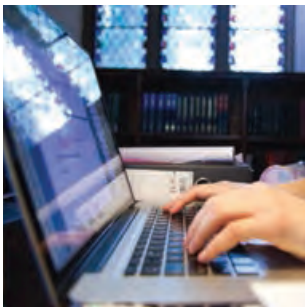
29 and 30 June and 16 September 2016

[www.oriel.ox.ac.uk/content/](http://www.oriel.ox.ac.uk/content/open-days)

[open-days](#)

[and](#)

[ox.ac.uk/opendays](http://ox.ac.uk/opendays)



Oriel is an inclusive academic community with a friendly atmosphere. Like other colleges, we value diversity and encourage applications from bright students of all backgrounds. We also recognise the increasing financial needs of students today and offer bursaries, prizes for outstanding academic achievement, generous travel grants and access to hardship funds. The tutors at Oriel take a keen interest in the academic development of their students, not only through their regular interactions in tutorials but also through encouraging students to relate their work to, and engage with, the rich programme of research active in college and the rest of the University. As crucial preparation for their future lives and careers, we work to help our undergraduates achieve the highest academic standards. Each term Oriel holds Joint Academic Forums to which all members of Oriel are invited to discuss research topics and questions from an interdisciplinary perspective. We are always keen to meet prospective students and their families – please stop by if you have any questions or would like a college tour.

### **Location**

Oriel's main entrance is on beautiful Oriel Square in the city centre, just off the High Street. Shops, the Bodleian Library, University departments and the railway/bus stations are only a short walk away.

### **Accommodation and meals**

All students can live in college for the duration of their course; most undergraduates (and all first years) live

on the main site. Rooms are graded for cost according to size and facilities. Many rooms on the main site have their own bathroom, or share it with one other room. All meeting rooms, common areas and student bedrooms have Wi-Fi. Three cooked meals are served in the dining hall every weekday. Evening meals at Oriel are extremely popular and social occasions. There are also kitchens for students who want to cook for themselves.

### **Facilities**

Oriel has an impressive library of more than 100,000 volumes that is open 24 hours a day and has Wi-Fi.

Undergraduates have their own common room, shop, TV room and an annexe for meetings or parties. Our popular college bar hosts a variety of social events including themed parties ('bops'). Oriel has its own sports ground, gymnasium, squash court and boathouse, with facilities for all major sports. There is also a music practice room with a piano.

### **Student societies**

Oriel has a social and active student body. Our drama society's annual highlight is a play staged outdoors in front quad. Oriel has a very good mixed chapel choir and an active music society. Other flourishing clubs include the film society and Raleigh (arts/literature) society.

The college's sports teams include badminton, basketball, cricket, darts, football, modern pentathlon, netball, rowing, rugby, squash and water polo. The emphasis is on enthusiasm, giving the opportunity for everyone to take part.

What can you study at these colleges?  
page 146



## **Pembroke College, OX1 1DW**

[www.pmb.ox.ac.uk](http://www.pmb.ox.ac.uk)

+44 (0) 1865 276444

### **UCAS campus code: I**

#### **Founded**

1624

#### **Student numbers**

undergraduates 367

graduates 216

#### **Admissions information**

+44 (0) 1865 276412

[admissions@pmb.ox.ac.uk](mailto:admissions@pmb.ox.ac.uk)

Tutor for Admissions:

Nancy Braithwaite

Access Fellow: Dr Peter Claus

Admissions Officer: Emily Harrington

#### **Open days**

29 and 30 June and 16 September 2016

[www.pmb.ox.ac.uk/students/](http://www.pmb.ox.ac.uk/students/admissions/open-days)

[admissions/open-days](http://www.pmb.ox.ac.uk/students/admissions/open-days)

and

[www.pmb.ox.ac.uk/opendays](http://www.pmb.ox.ac.uk/opendays)



Pembroke is a lively, inclusive and supportive academic community, with a commitment to excellence. Our strong inter-disciplinary ethos and collaborative environment encourages undergraduates, graduates and academic staff to work together and allow Pembroke students to enhance their studies with a broader outlook on the world.

We are committed to ensuring that motivated and talented students from any background feel able to apply to Pembroke. As with other colleges, we are proud pioneers of an in-depth academic outreach programme with state schools in London and the north-west. We also offer generous financial support, including travel grants, prizes and scholarships to reward academic excellence and hardship funds to support those in need.

### **Location**

Pembroke is conveniently located in the city centre, off St Aldate's and not far from the river.

### **Accommodation and meals**

Undergraduates are offered college accommodation for at least three years. While finalists often choose rooms at our large annexe building, 7 minutes' walk away next to the river, all others live on the college's main site which is a fully catered option and where we offer a mix of traditional and modern buildings and a range of room sizes. Many rooms are ensuite and several are adaptable to accommodate a range of disabilities. Pembroke has made a significant investment in recent years to ensure that all public facilities have step-free access.

Main meals are served in the hall – 'pay as you go' lunch on weekdays, and dinner Sunday to Friday. Farthings, the college café, is open 8am to 10pm Monday to Thursday and until 6pm on Fridays, and offers a wide range of drinks and snacks. Brunch is available from Farthings at weekends. There are also some shared kitchens throughout the college for self-catering.

### **Facilities**

The college library has an excellent selection of texts for undergraduate courses and 24-hour opening in term time. The librarian provides advice and support with research techniques, referencing and other study skills.

In 2013 Pembroke opened a new quad on its main site, complete with multi-purpose auditorium, café, seminar rooms and an art gallery. These new facilities provide spaces for our thriving academic and artistic societies and events.

Wi-Fi is available throughout college, as well as wireless printing facilities.

Pembroke has its own sports ground and boathouse, and students can take up heavily discounted membership of the nearby LA Fitness gym.

### **Student societies**

In addition to the myriad of sports teams and music and drama activities at Pembroke, the college was the first to have a JCR-run Art Collection (founded in the 1940s) – this is linked to a charitable fund which provides grants to students as well as enabling new purchases.

More on colleges:  
[ox.ac.uk/ugcolls](http://www.ox.ac.uk/ugcolls)



# The Queen's College



## The Queen's College, OX1 4AW

[www.queens.ox.ac.uk](http://www.queens.ox.ac.uk)  
+44 (0) 1865 279120

### UCAS campus code: J

#### Founded

1341

#### Student numbers

undergraduates 342  
graduates 122

#### Admissions information

+44 (0) 1865 279161

[admissions@queens.ox.ac.uk](mailto:admissions@queens.ox.ac.uk)

Admissions Tutor: Dr Jonathan Doye  
Schools Liaison Officer:

Harriet Rudden

Admissions Secretary:

Yvonne Benton

#### Open days

29 and 30 June and 16 September 2016  
[ox.ac.uk/opendays](http://ox.ac.uk/opendays)

25 April to 17 June 2016: small,  
informal open days on Wednesdays  
and Fridays

[www.queens.ox.ac.uk/open-days](http://www.queens.ox.ac.uk/open-days)



The community at Queen's is diverse, drawn from every part of the UK, elsewhere in the EU and the wider world. Applications are encouraged from anyone who possesses a love of their chosen subject, the desire to take it further and strong academic potential. Our community is fused early on by the fact that the majority of first years live together, and the college enjoys open and engaged relations between tutors and students as well as supporting an active graduate community. All this on a beautiful and central site, which has been gradually modernised over the years.

The Queen's Hardship Fund provides generous support in cases of need. Grants are also available for travel for academic purposes and to allow people to stay in Oxford outside term. A further fund provides additional support for non-academic projects. Good work is rewarded by bursaries.

### Location

Queen's stands prominently on the High Street, a few minutes' walk from the Bodleian Library and the University's Science Area, Christ Church Meadow and city centre. Buses to London leave from outside the front gates.

### Accommodation and meals

Queen's guarantees accommodation to all students on three-year courses, and so far has always been able to house students on four-year courses. Much of the accommodation is ensuite. The kitchen and servery provide excellent food at cost price. The servery is also open throughout the morning for tea, coffee and snacks.

### Facilities

The library contains about 100,000 volumes, including a large collection of rare books of international importance. There is 24-hour access, and separate libraries for Law and Egyptology. We can purchase any additional books required by undergraduates for their studies, and all students receive generous book grants. The 17th-century upper library, one of the finest rooms in Oxford, serves as a reading room. Wi-Fi is available throughout the college, and there is a well-equipped printer room.

The college has two music practice rooms and a new state-of-the-art auditorium, complete with grand piano. The gardens provide a space for work and relaxation adjacent to the college bar. The college also has a gym, an extensive sports field by the river, a boathouse and two squash courts. The common room hosts the popular student-run daily JCR Tea.

### Student societies

Drama is always strong, with regular productions by the Eglesfield Players, named after the college's founder. Music is also a strength: the choir is widely regarded as the finest mixed-voice chapel choir in Oxford, and the Frobenius organ attracts performers of international fame. Sport has always flourished at Queen's, welcoming both enthusiastic beginners and serious sports players. The student-run Arts Week and college-wide Christmas events are yearly hits.

What can you study  
at these colleges?  
page 146





# Regent's Park

Permanent Private Hall



## Regent's Park College, OX1 2LB

[www.rpc.ox.ac.uk](http://www.rpc.ox.ac.uk)

+44 (0) 1865 288120

### UCAS campus code: 8

#### Founded

1810

#### Student numbers

undergraduates 115

graduates 70

#### Admissions information

+44 (0) 1865 288153

[academic.administrator@regents.ox.ac.uk](mailto:academic.administrator@regents.ox.ac.uk)

#### Open days

29 and 30 June and 16 September 2016

[www.rpc.ox.ac.uk/courses/open-days-and-access](http://www.rpc.ox.ac.uk/courses/open-days-and-access)

and

[ox.ac.uk/opendays](http://ox.ac.uk/opendays)



Regent's Park College specialises in the arts, humanities and social sciences. Our beautiful quad offers a retreat from the bustle of the city but also puts you just minutes from everything you will need.

Regent's is famed for its friendly atmosphere and strong sense of community, and its undergraduates often excel in the sporting and cultural life of the University as well as in academic results. Tutors give meticulous care to the academic well-being of their students, providing them with a supportive environment as they move towards success in their final examinations. Students are members of many college committees including the Governing Body, and their views are actively sought in determining college policies.

### Location

Regent's is very close to the city centre and the University libraries and amenities.

### Accommodation and meals

First-year students are provided with spacious study bedrooms (with hand basins), and communal bathrooms and kitchens. Second-year students normally live out in privately rented accommodation and return as finalists to live in on-site flats.

Regent's enjoys excellent food, and the catering committee (consisting of students and staff) provides regular feedback to the catering team. Breakfast, lunch and dinner are available in the college's dining hall from Monday to Friday during term. Hot meals are

served at lunch and dinner, and at lunch a well-stocked salad bar is also available.

On each Friday evening during term, dinner is known as Formal Hall: students and staff wear gowns and dress more formally, and students may bring their own wine to the tables for these meals. Formal Halls are a social high point of the college week, and are usually followed by JCR social events.

### Facilities

Wi-Fi is available throughout the college.

The library at Regent's, open 24/7, has core collections in all of the subjects taught in college, and its theology collection is one of the best in the University. There are computers and printing facilities in the library.

The JCR is equipped with leather sofas and a large TV with games console and has one of the last student-run bars in Oxford. Each day at 11am and 4pm the JCR has 'brew' (tea and biscuits), which is a great way to get to know people.

### Student societies

There are numerous student societies and sports teams based at Regent's. Undergraduates also enjoy full use of University sports facilities, and many compete in University sports teams. Over the last few years Regent's has been well represented in University drama, and students have also become leading figures in some of the University's most prestigious societies. Regent's Park College provides a great base for enjoying everything that undergraduate life has to offer.

More on colleges:  
[ox.ac.uk/ugcolls](http://ox.ac.uk/ugcolls)



# St Anne's



## St Anne's College, OX2 6HS

www.st-annes.ox.ac.uk  
+44 (0) 1865 274800

### UCAS campus code: K

#### Founded

1879

#### Student numbers

undergraduates 422  
graduates 308

#### Admissions information

+44 (0) 1865 274825  
schools.liaison@st-annes.ox.ac.uk

#### Open days

29 and 30 June and 16 September 2016  
www.st-annes.ox.ac.uk/opendays  
and  
ox.ac.uk/opendays



At St Anne's we are committed to academic opportunity and excellence. We are an open, modern and integrated college, one of the largest in Oxford: a community of researchers and teachers, graduates and undergraduates. Our tutors and staff are known for being approachable and supportive and we have an excellent reputation for welfare.

The college was founded to advance educational emancipation, and this remains at the heart of our ethos. St Anne's rewards outstanding academic work, gives generous grants for research and travel, and offers exceptional chances for study in Japan and work experience in Europe, as well as UK-based internships.

### Location

St Anne's is slightly north of the city centre – 5 minutes by bicycle – just by the University Parks, close to the Science Area, Ashmolean Museum, Modern Languages and Classics Faculties and Mathematical and Oriental Institutes, as well as the new Radcliffe Observatory Quarter.

### Accommodation and meals

St Anne's has an excellent range of college accommodation which it offers to undergraduates for three years of their course. Nearly half the rooms are ensuite, and some rooms are specially designed for disabled access.

St Anne's is renowned for the quality of its food. Most meals are relaxed self-service affairs, alongside popular formal guest nights when students can bring friends. The college coffee shop is

extremely popular with students and staff and there are also self-catering kitchenettes close to all rooms.

### Facilities

Our large college library is open 24 hours, with over 110,000 books and 73 workspaces for students to use. 2016 sees the opening of our new library, a landmark building which will add 59 more workspaces, 4 collaborative work rooms, and a dedicated space for learning information skills.

Our lecture theatres are excellent venues for teaching, drama, film and music. There is a lively bar, common room, gym, dark room and music practice rooms. The college shares a boathouse with St Hugh's and Wadham and a nearby sports ground with St John's.

### Student societies

We have numerous events and activities: regular music recitals and film screenings, guest speakers from public life, an a cappella choir and an orchestra. Twice a term there are subject-family seminars, when members of college gather to listen to papers given by fellows\* and students, followed by an informal dinner. The active JCR (Junior Common Room) organises everything from discussion groups to art classes. The college nurtures serious teams, notably in football and rowing, but there is also a wide range of sporting pursuits for those after sheer fun.

*\*Normally academics, these are senior members of college who belong to its governing body.*

What can you study at these colleges?  
page 146



# St Benet's Hall

Permanent Private Hall



## St Benet's Hall, OX1 3LN

[www.st-benets.ox.ac.uk](http://www.st-benets.ox.ac.uk)

+44 (0) 1865 280556

### UCAS campus code: 1

#### Founded

1897

#### Student numbers

undergraduates 48

graduates 4

#### Admissions information

+44 (0) 1865 280559

[senior.tutor@stb.ox.ac.uk](mailto:senior.tutor@stb.ox.ac.uk)

#### Open days

29 and 30 June and 16 September 2016

[www.st-benets.ox.ac.uk/open-days](http://www.st-benets.ox.ac.uk/open-days)

and

[ox.ac.uk/opendays](http://ox.ac.uk/opendays)



Small and friendly, St Benet's is the nearest equivalent today to the first halls of the University, with close daily contact between tutors and students. Until 2015 the hall admitted only male undergraduates, but now accepts applications from both male and female applicants.

Undergraduates and graduates, of all faiths and none, study alongside a small community of monks, forming a total student body of about 65. Around 16–20 undergraduates are admitted each year for a range of subjects in the humanities and social sciences. More homely than most colleges, St Benet's provides a strong sense of community within the hall as well as full engagement in University activities outside it.

All members are welcome to attend the daily Office and Mass in the chapel, but no one is obliged to. Students are asked to be respectful of the monastic life, but the atmosphere is unpressurised, warm and friendly.

### Location

At 38 St Giles', close to the very centre of Oxford, in a handsome six-storey Georgian Grade II-listed building.

### Accommodation and meals

First-year undergraduates live in; most other undergraduates live out. From October 2016 students living in will be accommodated in two buildings: the main building on St Giles', and a newly acquired building at 11 Norham Gardens, about 7 minutes' walk away. This extra building will provide accommodation for male and female students, along with

teaching rooms and common areas. Wherever they are housed, all students will continue to eat their meals in the main building on St Giles' and have access to all its facilities.

Community and hospitality are important in the Benedictine tradition. Tutors, students and monks all eat together at one common table, everyone taking a turn at serving. Guests are welcome at any meal, including three formal meals per week. Once a term there is a Hall Guest Night, where students mingle freely with often eminent guests.

### Facilities

The library provides a focused and up-to-date collection for undergraduate needs, open 24/7. There is also a separate IT centre, and wireless internet access. Students share the main Common Room of the hall with the monks and tutors, and also have a separate JCR with widescreen TV. There is a pleasant enclosed garden and a much-used croquet lawn.

### Student societies

The hall has its own drama club and rowing VIII. All students can play a wide range of sports with the teams of other colleges as well as University teams, and participate in many University societies. We usually have several Blues\* at any one time, as well as officers of the Oxford Union debating club and OUSU, and members of other organisations, orchestras and choirs.

\*a student who has represented the University at sport against Cambridge

More on colleges:  
[ox.ac.uk/ugcolls](http://ox.ac.uk/ugcolls)



# St Catherine's



## St Catherine's College, OX1 3UJ

[www.stcatz.ox.ac.uk](http://www.stcatz.ox.ac.uk)

+44 (0) 1865 271700

**UCAS campus code: L**

### Founded

1963

### Student numbers

undergraduates 476

graduates 322

### Admissions information

+44 (0)1865 271703

[admissions@stcatz.ox.ac.uk](mailto:admissions@stcatz.ox.ac.uk)

Tutor for Admissions:

Dr Byron Byrne

Deputy Academic Registrar

(Admissions & Access): tbc

### Open days

29 and 30 June and 16 September 2016

[www.stcatz.ox.ac.uk/open-days](http://www.stcatz.ox.ac.uk/open-days)

and

[ox.ac.uk/opendays](http://ox.ac.uk/opendays)



Catz is Oxford's youngest undergraduate college and one of its largest and most diverse communities. We treasure the traditional values of Oxford college life, but pursue a distinctly modern agenda.

We offer a wide range of subjects, with a roughly even split between science and arts. Most of our fellows\* have an international reputation, and 10 Nobel Prize winners have been members. Fellows have been involved in spin-out companies to exploit scientific discoveries made at the University. St Catherine's is also home to the Cameron Mackintosh Chair of Contemporary Theatre (recent holders include Patrick Stewart, Kevin Spacey, Meera Syal and Stephen Fry). All this makes for a stimulating intellectual environment, and the college is proud of its place at the forefront of innovation, research and contemporary culture.

Its modern architecture (designed by the award-winning architects Arne Jacobsen and Stephen Hodder) and restful open spaces (both Grade I listed) give the college a friendly and relaxed atmosphere, in which everyone is quickly made to feel at home. As a large college we are a cosmopolitan society, with students drawn from more than 50 countries.

### Location

St Catherine's is situated at the end of Manor Road, off St Cross Road – an ideal location close to the city centre, the Science Area, University faculties and libraries (the English and Law Faculties and Economics and Politics Departments are next door), yet surrounded by

meadows, parks and water. Many undergraduates appreciate the tranquility of the extensive college grounds. This is a college at the heart of the University, barely 10 minutes' walk from the centre, but with a distinctly rural feel.

### Accommodation and meals

The vast majority of undergraduates live in college for three years and enjoy the advantage of living close to college facilities. All rooms have internet access and many offer ensuite facilities. We have specially adapted rooms for students with disabilities. Meals are provided in hall on a pay-as-you-eat basis. Those who prefer to cater for themselves can do so by using the small kitchens provided on each floor of the accommodation.

### Facilities

St Catherine's offers excellent facilities, including a large college library with over 60,000 volumes, well-equipped computer rooms and a spacious and comfortable Junior Common Room (JCR). Sport, music, art and drama enjoy a high profile in the college; on site there are squash courts, a gymnasium, a punt house, a music house for practice and performance and theatres for both indoor and outdoor productions.

### Student societies

Clubs, societies and discussion groups are prominent in Catz undergraduate life: there are many different sports teams, a thriving law society and a flourishing music society.

What can you study at these colleges?

page 146

\*Normally academics, these are senior members of college who belong to its governing body.



# St Edmund Hall



## St Edmund Hall, OX1 4AR

[www.seh.ox.ac.uk](http://www.seh.ox.ac.uk)

+44 (0) 1865 279000

**UCAS campus code: M**

### Founded

c1278

### Student numbers

undergraduates 405

graduates 257

### Admissions information

+44 (0) 1865 279009

[admissions@seh.ox.ac.uk](mailto:admissions@seh.ox.ac.uk)

Admissions Administrator:

Jennifer Gibbard

Schools Liaison Officer:

[schools.liaison@seh.ox.ac.uk](mailto:schools.liaison@seh.ox.ac.uk)

### Open days

29 and 30 June and 16 September 2016

[www.seh.ox.ac.uk/admissions/](http://www.seh.ox.ac.uk/admissions/open-days)

[open-days](#)

and

[ox.ac.uk/opendays](http://ox.ac.uk/opendays)

St Edmund Hall is home to a friendly, active and diverse community. Studying here, you will soon feel part of a large but inclusive community.

Known across the University as 'Teddy Hall', the college's history can be traced back to the 13th century and it is one of the oldest surviving places to house and educate undergraduates in any university. Today it is a beautiful blend of ancient and modern with buildings dating from every century since the 16th.

### Location

St Edmund Hall is located just off the High Street in Queen's Lane with easy access to departments, libraries, museums and shops. Despite being in the city centre, the college site is quiet and relaxed.

### Accommodation and meals

The college offers rooms to undergraduates for at least two years of study, and all first years live on the main site which helps to build a strong sense of community. Additional accommodation annexes are all within a short walk of college. All rooms are single study bedrooms with a washbasin or private bathroom. There are self-catering facilities at every site. Breakfast, lunch and dinner are served in the large, modern dining hall, prepared by the college's award-winning chef.

### Facilities

The large and well-stocked college library is housed within the Norman church of St Peter-in-the-East: a spectacular and peaceful setting for study. Some special

collections are held in the separate 17th-century Old Library. Social and recreational spaces include the Junior Common Room (JCR) with satellite TV, hot drinks, newspaper subscriptions and a separate games room. We also have a music room and a cosy, historic college bar. All college sites, including libraries, common rooms and bedrooms, have high-speed wireless internet provision. There are computer rooms with printing facilities on the main site and at our Norham Gardens accommodation. Although many of our buildings are old, all main areas of the college are accessible.

### Student societies

Our students take part in many different extra-curricular activities at the hall alongside their studies. The college has a long tradition in drama, music, the arts and journalism. Our strong artistic community is built around the John Oldham Drama Society, musical activities led by the Director of Music and regular creative writing workshops.

St Edmund Hall students participate in a wide range of sports at all levels. There is a dedicated multi-gym at our Norham Gardens centre, as well as pitches in the University Parks and a boathouse on the River Isis. The crowds that gather to support our teams are one example of the famous 'Hall spirit', which unites our community and is fondly remembered long after graduation.



More on colleges:  
[ox.ac.uk/ugcolls](http://ox.ac.uk/ugcolls)



# St Hilda's



## St Hilda's College, OX4 1DY

[www.st-hildas.ox.ac.uk](http://www.st-hildas.ox.ac.uk)

+44 (0) 1865 276815

### UCAS campus code: N

#### Founded

1893

#### Student numbers

undergraduates 412

graduates 162

#### Admissions information

+44 (0) 1865 286620

[college.office@st-hildas.ox.ac.uk](mailto:college.office@st-hildas.ox.ac.uk)

#### Open days

29 and 30 June and 16 September 2016

[www.st-hildas.ox.ac.uk/admissions/](http://www.st-hildas.ox.ac.uk/admissions/)

open-days

and

[ox.ac.uk/opendays](http://ox.ac.uk/opendays)

The motto of St Hilda's is excellence and equality. This captures a very clear and powerful focus on supporting our students – to be the best they possibly can academically, in an environment which allows them to thrive – whatever their background. With passionate and committed tutors, a great range of college awards for academic work, travel, sport and other activities, and one of the most friendly and relaxing settings to be a student in Oxford, St Hilda's provides all the right ingredients for success in your degree. Former students are encouraged to keep in touch through the Association of Senior Members and its professional networks which can provide help at the start of new careers.

### Location

The college is on a beautiful riverside site with easy access to the city centre, the University sports complex and the lively culture of East Oxford.

### Accommodation and meals

First- and final-year students have rooms in college. In the second year there is the opportunity to live in a rented house near the college. Food in college is highly rated, and we cater for all special diets. There is also the option of self-catering in one of the many student kitchens in college.

### Facilities

The college library has an extensive collection of books, journals and electronic resources to support all the subjects we offer. It boasts seven reading rooms over three floors, with seating for 158 readers. The main reading room looks out over the River Cherwell and the dreaming spires of central Oxford. Students enjoy performances of every kind of music in the Jacqueline du Pré Music Building, which also has five practice rooms and a recording studio that students may use.

St Hilda's is one of the few undergraduate colleges right on the river. Free college punts can be used right through the summer months. The University sports complex is just around the corner with its gym and swimming pool; through the college, you can get subsidised membership for both.

### Student societies

The JCR provides a student hub in college – with a TV room, pool table, bar and butterfly. The committee organises regular social events such as parties and formal halls, and options for being involved in student clubs and activities include music, drama, the college student newspaper and a wide range of sport (such as rowing, netball, hockey, rugby and yoga). At the JCR Arts Festival students can show their own work (sculpture, painting, photography) and put on plays and concerts. And anyone is welcome to start their own society!



What can you study at these colleges?

page 146



# St Hugh's



## St Hugh's College, OX2 6LE

[www.st-hughs.ox.ac.uk](http://www.st-hughs.ox.ac.uk)

+44 (0) 1865 274900

### UCAS campus code: R

#### Founded

1886

#### Student numbers

undergraduates 435

graduates 296

#### Admissions information

+44 (0) 1865 274910

[admissions@st-hughs.ox.ac.uk](mailto:admissions@st-hughs.ox.ac.uk)

#### Open days

29 and 30 June and 16 September 2016

[www.st-hughs.ox.ac.uk/study-at-st-](http://www.st-hughs.ox.ac.uk/study-at-st-hughs/undergraduate/open-days)

[hughs/undergraduate/open-days](http://www.st-hughs.ox.ac.uk/study-at-st-hughs/undergraduate/open-days)

and

[ox.ac.uk/opendays](http://ox.ac.uk/opendays)



St Hugh's is one of the largest colleges in Oxford. The college was established to offer an Oxford education to women, and it retains a strong sense of its radical tradition and of the importance of opening Oxford up to all who would do well here. St Hugh's now accepts men and women and welcomes students from every country and any kind of background.

St Hugh's has a beautiful setting just to the north of the city centre, with Edwardian buildings and some of the largest college grounds. The college is known as the 'island site' because of its tranquil gardens, and it is a restful place to live and work.

The college awards Scholarships or Exhibitions (grants) to undergraduates on the basis of their performance in University examinations, or for other excellent work. All members of college are entitled to apply for grants to help with vacation travel connected to their course of study, and there are also funds available for those who encounter unforeseen financial hardship.

### Location

St Hugh's College is about 10 minutes' walk from the city centre: within easy reach, on foot or by bicycle, of all University departments and libraries.

### Accommodation and meals

Accommodation is available on the main college site for all undergraduates right through their course. Nearly half of rooms have their own bathroom. All rooms have free internet connection. Shared kitchens are available as an

alternative to eating in the main hall.

Meals in hall are paid for using a cashless card system.

### Facilities

St Hugh's has one of the largest and best-stocked of all college libraries, housed in a beautiful art deco building with 70,000 volumes and 24-hour access. There are dedicated computer rooms, an impressively equipped gym and a student-run bar; the college's chapel is open to all college members, regardless of belief.

### Student societies

There are academic societies in many subject areas, and the college has a very active musical and artistic life, including a chapel choir, and annual prizes for musical performance and creative writing. Sport within college is very popular: as well as having a new gym on site, the gardens are used for frisbee and croquet, and St Hugh's has a share in a boathouse, squash courts and a sports ground. The college hosts a ball every two years in its beautiful gardens.

More on colleges:  
[ox.ac.uk/ugcolls](http://ox.ac.uk/ugcolls)



## St John's College, OX1 3JP

[www.sjc.ox.ac.uk](http://www.sjc.ox.ac.uk)

+44 (0) 1865 277300

**UCAS campus code: S**

### Founded

1555

### Student numbers

undergraduates 386

graduates 225

### Admissions information

+44(0) 1865 277317

[sarah.jones@sjc.ox.ac.uk](mailto:sarah.jones@sjc.ox.ac.uk)

Undergraduate Admissions Officer:

Sarah Jones

Access and Outreach Officer:

Emma Coulson

### Open days

29 and 30 June and 16 September 2016

[www.sjc.ox.ac.uk/396/Open-days-](http://www.sjc.ox.ac.uk/396/Open-days-and-visits.html)

[and-visits.html](http://www.sjc.ox.ac.uk/396/Open-days-and-visits.html)

and

[ox.ac.uk/opendays](http://ox.ac.uk/opendays)

St John's has a lively and supportive atmosphere, with extensive grounds and some of the most beautiful gardens in Oxford.

We regard the link between teaching and research as important. All our tutors are active in research, and we have many graduate students. We have schemes for awarding grants to undergraduates for purchases of academic materials such as books and computing equipment, travel purposes of an academic nature, cases of unexpected financial hardship, musical training and costs incurred in representing the University in sports.

### Location

St John's is close to the city centre, with its main entrance on St Giles'. We are a short walk from many University departments, the Science Area and libraries.

### Accommodation and meals

All rooms are on the main site or nearby in Museum Road. We guarantee college accommodation for every year of an undergraduate course. Each room in college has an internet connection and all first-year students have access to a shared kitchen. We have excellent facilities for students with disabilities and special funds for visually impaired students.

Most meals in hall are self-service, with a wide range of options. You can buy snacks in the bar or cook for yourself. Kendrew Quad offers 70 ensuite rooms for students in later years along with a Wi-Fi café for all members of college.

### Facilities

We have an excellent library which is open from early morning until midnight every day in term, with over 1,000 new books added each year. There is a computer room with PCs, printers and internet access. We provide Wi-Fi coverage throughout the college.

As well as the student bar, television rooms and laundries, we have an art gallery, two squash courts and two gyms on site. There are plenty of spaces for events.

We have a 200-seater auditorium and music rooms. Our sports ground, a mile from the college, caters for football, rugby, cricket and tennis. There is also a boathouse with 11 boats on the river.

### Student societies

St John's has a joint orchestra with St Anne's College and an active chapel choir which gives concerts, records CDs and tours internationally. We also host the Humanities Visiting Professorship in classical music and regular amateur and professional recitals and concerts. We invite eminent artists in different media to spend a period in college as Artist in Residence.

Our students stage pantomimes and reviews, and join productions in the University and at the Oxford Playhouse. Sport is played enthusiastically, with everyone having a chance to participate.

We also have our own TV station reflecting the wide range of views and interests of our students.



What can you study at these colleges?  
page 146





# St Peter's



## St Peter's College, OX1 2DL

[www.spc.ox.ac.uk](http://www.spc.ox.ac.uk)

+44 (0) 1865 278900

### UCAS campus code: T

#### Founded

1929

#### Student numbers

undergraduates 341

graduates 166

#### Admissions information

+44 (0) 1865 278863

[admissions@spc.ox.ac.uk](mailto:admissions@spc.ox.ac.uk)

#### Open days

29 and 30 June and 16 September 2016

[www.spc.ox.ac.uk/study-here/](http://www.spc.ox.ac.uk/study-here/)

[open-days](#)

and

[ox.ac.uk/opendays](http://ox.ac.uk/opendays)

St Peter's is one of Oxford's younger colleges, noted for its friendliness, flexibility and informality. St Peter's is an inclusive, tolerant and open community and, in accordance with the University's admissions policy, we encourage students from all backgrounds to apply.

The undergraduate community is both tightly knit and notably active in University clubs and societies. The college is renowned for the excellent relations that exist between students and tutors. We have a strong welfare team for student support, and a student finance officer who is on hand to help students facing unforeseen financial difficulties.

### Location

The college occupies an attractive site close to many University departments and libraries, and to both bus and railway stations. Oxford's shops, cafés, theatres and cinemas are just minutes away, as is the popular Castle site.

### Accommodation and meals

We are able to house all undergraduates for at least two years. Undergraduates generally live out of college in the second year. Accommodation ranges from traditional study bedrooms on the main college site to modern purpose-built residences (with ensuite facilities and small communal kitchens) a few minutes' walk away. All rooms are singles and have internet points. A full meal service is provided in the dining hall.

### Facilities

The library is open 24 hours a day. It is fully automated and is well stocked with

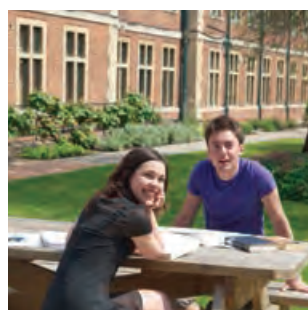
both basic texts and some of the more specialised publications needed for undergraduate work. There is a separate law library and reading room. There are a number of computers in public areas including the library, providing internet access. The chapel is a place of worship with an open and inclusive ethos. It has some of the finest acoustics in Oxford and is a venue for concerts, lectures, plays and social events. We provide excellent music facilities including two grand pianos, an organ and a harpsichord, as well as ample practice space.

The college has access to shared sports facilities, including a boathouse and subsidised gym membership.

The JCR and student-run college bar are used for events throughout the year. The JCR has TV, video and games facilities, and is a large comfortable social space.

### Student societies

From rowing to table football: all the major sports – and minor ones – are represented at St Peter's, with many teams enjoying considerable success. Artistic activities flourish and distinguished speakers are regularly invited to give talks. Music is a particular strength, with a strong instrumental, choral and jazz tradition. The music society puts on concerts regularly, and the mixed chapel choir sings regularly in chapel services and also tours Europe. There are opportunities to write for college publications, and the drama society organises productions regularly and welcomes new actors, playwrights and stage hands.



More on colleges:  
[ox.ac.uk/ugcolls](http://ox.ac.uk/ugcolls)



# St Stephen's House

Permanent Private Hall

for students aged 21+ only



## St Stephen's House, OX4 1JX

www.ssho.ox.ac.uk

+44 (0) 1865 613500

**UCAS campus code\*: P**

### Founded

1876

### Student numbers

undergraduates 17

graduates 46

### Admissions information

+44 (0) 1865 613500

admissions@ssh.ox.ac.uk

### Open days

29 and 30 June and 16 September 2016

ox.ac.uk/opendays

*\*If you choose this campus code when making your application we will contact you by email to confirm which hall you would like to apply to.*



St Stephen's House is an Anglican foundation specialising in theological teaching and research. All our undergraduates are mature students (21 or over) and many are training for ordination in the Anglican Communion.

The college particularly welcomes mature candidates wishing to read for the BA in Theology and Religion; this can be with Senior Status (starting in the second year of the degree course) if a first degree is already held.

Students need not be Anglicans, but they will be in sympathy with our educational and spiritual ethos. They receive specialist teaching from our tutors in the principal fields of Christian theology and have contact with a wide variety of visiting tutors who are outstanding in their areas. All members of the community are welcome at the offices of morning and evening prayer and the Eucharist, which are celebrated daily.

### Location

St Stephen's House is in east Oxford, a vibrant, multicultural area just 10 minutes' walk over Magdalen Bridge from the city centre and the University libraries. It is opposite the University's Iffley Road sports complex.

### Accommodation and meals

We offer students accommodation for the whole of their course.

Accommodation is either in single rooms in the main college building, half of which have ensuite facilities, or in a range of flats and houses which are part of the main campus and which are

particularly well suited to candidates with partners or families. Meals in hall are provided daily for all students during term and there is a guest dinner each week. There is a large, well-equipped kitchen for student use.

### Facilities

All student rooms on the main site and in the college flats have connections to the internet and University network. The college library is open permanently and its collections cover all areas of theology. It has computer facilities, and there is also a separate computer room, along with study facilities for non-residents.

The college occupies the fine buildings of a former monastic community; it has a quiet cloister, a large garden suitable for children, a comfortable common room and bar, and car parking for students and staff.

### Student societies

The common room is the heart of a lively and friendly community life. It organises sporting and social events, and there is a particularly flourishing musical life. Members of the college have represented the University in various sports.

What can you study at these colleges?

page 146



# Somerville



## Somerville College, OX2 6HD

[www.some.ox.ac.uk](http://www.some.ox.ac.uk)

+44 (0) 1865 270600

### UCAS campus code: U

#### Founded

1879

#### Student numbers

undergraduates 388

graduates 145

#### Admissions information

[www.some.ox.ac.uk/studying-here](http://www.some.ox.ac.uk/studying-here)

+44 (0) 1865 270619

[admissions@some.ox.ac.uk](mailto:admissions@some.ox.ac.uk)

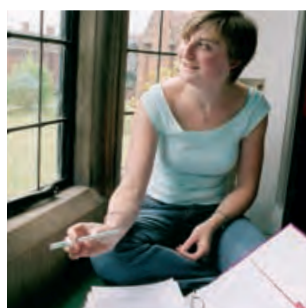
#### Open days

29 and 30 June and 16 September 2016

[www.some.ox.ac.uk/opendays](http://www.some.ox.ac.uk/opendays)

and

[ox.ac.uk/opendays](http://ox.ac.uk/opendays)



From its foundation in 1879 Somerville's graduates have been changing the world. Our former students include two prime ministers; the only British woman to win a Nobel Prize for science; generations of distinguished novelists; pioneers in social and public service; and people of distinction in countless other fields. Somerville continues to expect the best from its students, and provides comprehensive support to help them reach their full academic potential.

The college was named after the eminent scientist and mathematician Mary Somerville (1780–1872). The college was founded as a women's college and was also non-denominational; two features previously unknown in Oxford colleges. The college has admitted men since 1994, but its groundbreaking origins inspire an ethos of openness and a willingness to question accepted orthodoxies both of which characterise Somerville today.

### Location

Somerville's position on the Woodstock Road, alongside St Giles' and the vibrant Jericho area of the city, is convenient for almost everything in Oxford. The college is next door to the Mathematics and Humanities facilities and Jericho Health Centre in the Radcliffe Observatory Quarter, and a 5-minute walk from the Science Area. It is easy to walk or cycle to anywhere else in the University.

### Accommodation and meals

Accommodation in college is guaranteed for all students in their first, third and fourth years and is available for most

second years, with Oxford bursary recipients guaranteed accommodation in this year as well. Somerville is known for its good food serving all tastes, with three meals a day available at very reasonable cost and a bar serving food and drink throughout the day. Vacation residence is available for academic purposes outside term time, with financial support for those who need it.

### Facilities

Somerville has one of the best undergraduate libraries in Oxford, containing more than 120,000 books and open 24 hours a day. Wi-Fi is available throughout the college and there are well-equipped computer rooms. Sports facilities include an on-site fitness suite, as well as playing fields and a boathouse (the college has five boats), which are shared with other colleges. Generous travel and special project grants are offered to help students widen their experience during vacations and to help with volunteering.

### Student societies

One of Somerville's greatest assets is its students' enthusiasm for college life. There is an active music society and the excellent choir has embarked on several national and international tours, with two commercial CDs released so far. Arts Week is an annual highlight.

Undergraduates from Somerville are much involved in University societies, from every kind of sport to drama, debating and many other activities.

More on colleges:  
[ox.ac.uk/ugcolls](http://ox.ac.uk/ugcolls)



## Trinity College, OX1 3BH

[www.trinity.ox.ac.uk](http://www.trinity.ox.ac.uk)

+44 (0) 1865 279900

**UCAS campus code: W**

### Founded

1555

### Student numbers

undergraduates 287

graduates 132

### Admissions information

+44 (0) 1865 279860

[admissions@trinity.ox.ac.uk](mailto:admissions@trinity.ox.ac.uk)

### Open days

29 and 30 June and 16 September 2016

[www.trinity.ox.ac.uk/undergraduates/](http://www.trinity.ox.ac.uk/undergraduates/open-days)

[open-days](http://www.trinity.ox.ac.uk/undergraduates/open-days)

and

[ox.ac.uk/opensdays](http://ox.ac.uk/opensdays)



Trinity is a medium-sized college which occupies a beautiful, spacious site in the city centre. Relationships between students and tutors are open and friendly.

In accordance with the University's admissions policy, we welcome applicants from all backgrounds, and are committed to ensuring each student benefits fully from their three or four years at Trinity. Our excellent facilities and welcoming student community are the ideal basis for academic success.

### Location

Trinity is in the very centre of Oxford: the Bodleian Library is just a few metres from our main entrance on Broad Street, while the main Science Area is less than 5 minutes' walk from our back gate on Parks Road.

### Accommodation and meals

Undergraduates are guaranteed college-owned accommodation for the complete duration of their course. This is on the main college site for the first two years. In their second year some students opt to share a 'set' with a friend, with a bedroom each, connected to a shared living area; others opt for a study bedroom. Our third-/fourth-year accommodation is less than 15 minutes' walk (or 5 minutes by bike) north of the college.

The food at Trinity is outstanding, and we cater for all dietary requirements. We also have kitchen facilities for students wanting to cook for themselves.

### Facilities

Trinity provides excellent facilities, as well as generous bursaries, to help students reach their full potential.

All student accommodation has internet access and there are computer rooms with free printing for students. The library is open 24 hours a day and aims to provide copies of all books that undergraduates need.

On site are an undergraduate common room, college bar, a squash court, gym, and music practice rooms. We are well equipped for music-making, with a baby grand piano and organ in chapel which are free for students to use, as well as three additional pianos on site. Our sports ground is 15 minutes away, with provision for cricket, football, hockey, rugby and tennis. The boathouse is on the main stretch of the river.

### Student societies

Our students are involved in a wide range of activities. The Trinity Players stage at least two productions a year, including one on our lawns. Women's and men's teams flourish in most sports. Our choir is non-auditioning, and gives recitals both in Oxford and on tour: in recent years visiting Tuscany, Budapest and Madrid. We also have a college orchestra, and smaller music groups. Many subjects have their own societies, hosting guest speakers and social events. There is also a debating society, a college newspaper and a careers society.

What can you study at these colleges?

page 146



# University College



## University College, OX1 4BH

[www.univ.ox.ac.uk](http://www.univ.ox.ac.uk)

+44 (0) 1865 276602

### UCAS campus code: X

#### Founded

1249

#### Student numbers

undergraduates 363

graduates 187

#### Admissions information

[www.univ.ox.ac.uk/prospectus](http://www.univ.ox.ac.uk/prospectus)

+44 (0) 1865 276677

[admissions@univ.ox.ac.uk](mailto:admissions@univ.ox.ac.uk)

#### Open days

29 and 30 June and 16 September 2016

[www.univ.ox.ac.uk/content/open-days-0](http://www.univ.ox.ac.uk/content/open-days-0)

and

[www.univ.ox.ac.uk/opendays](http://www.univ.ox.ac.uk/opendays)



Students at Univ come from all sorts of backgrounds, and from all over the world. They have two things in common: intellectual ability and potential. They also have the capacity and enthusiasm for hard work, and enjoy intellectual challenges. Univ has a well-deserved reputation for academic excellence, openness, informality and strong welfare and student support systems. To make it easy for everyone who gets a place to come here, we offer some of the most generous college bursaries at Oxford on top of University financial support. To make sure that everyone settles into their life in Oxford, we offer a carefully balanced Welcome Week and a programme of academic support activities for all new students. We are unique among colleges in offering a free pre-sessional maths booster week for students in the relevant mathematical, physical and medical sciences.

### Location

Univ is located right at the centre of the city, minutes away from the main libraries, lecture halls, laboratories, shops, restaurants, pubs, parks and the river. Our beautiful old buildings have been fully modernised for 21st-century needs, and we have several peaceful courtyards and gardens with grass and trees.

### Accommodation and meals

Undergraduates are offered accommodation for all three years of their course. Students studying four-year courses can usually also be housed in their fourth year. Our student accommodation is high quality and

affordable, while good-value high-quality food is served from our kitchen and buttery seven days a week in term time.

### Facilities

Students love working in our college library, which contains about 50,000 volumes with plenty of computers exclusively to support their study; there is a separate law library which is also well provided. Both libraries are open 24 hours a day in term. All student rooms are fully networked for computer use and also have telephones.

### Student societies

Many students at Univ take advantage of starting university to try out new interests and activities in their spare time. The Junior Common Room (JCR) is the student union for the college, and organises a wide variety of social events as well as representing students' needs. Lots of Univ students also get involved with our successful Ambassador Scheme, which works across the UK with schools, teachers and pupils to get them thinking about applying to university and to help them with their applications. There is a high level of participation in music through the music society and the chapel choir; typically there are about nine college concerts a year, while the drama society, the Univ Players, usually puts on a summer production each Trinity term. There are a number of other societies and college teams in many sports and access to excellent sports facilities.

More on colleges:  
[ox.ac.uk/ugcolls](http://www.ox.ac.uk/ugcolls)



### Wadham College, OX1 3PN

www.wadham.ox.ac.uk  
+44 (0) 1865 277900

#### UCAS campus code: Y

#### Founded

1610

#### Student numbers

undergraduates 453  
graduates 136

#### Admissions information

+44 (0) 1865 277545  
admissions@wadh.ox.ac.uk  
Admissions Officer:  
Catharine Baumann

#### Open days

29 and 30 June and 16 September 2016  
www.wadham.ox.ac.uk/students/  
open-days  
and  
ox.ac.uk/opendays



Wadham has high academic standards, maintained in an informal and progressive atmosphere. Known for its inclusive and welcoming culture, Wadham is a vibrant and relatively large college, offering most of the undergraduate courses that can be studied at Oxford. As with other colleges, we welcome academic excellence, diversity and independence. Working with the collegiate University, Wadham's access work with schools is well established, and we seek to recruit the very best students nationally and internationally, ensuring that selection is based purely on academic ability and potential.

#### Location

Located in the city centre, Wadham has large, quiet grounds, with some of the most beautiful gardens and buildings in Oxford. The Bodleian Library is just across the road and the Science Area is only a few minutes' walk away.

#### Accommodation and meals

Students are guaranteed on-site accommodation in their first and final (ie third or fourth) years. When not living in college-owned accommodation, students are given a grant to help with living-out costs. All college rooms are equipped with a fridge, telephone and internet. Whether students live in college or elsewhere, high-quality meals are provided on the main college site. On weekday evenings students have a choice of dining in hall, where dinner is served, or in the self-service refectory.

#### Facilities

Students have 24-hour access to Wadham's attractive library, which houses more than 40,000 books and periodicals and provides 100 desk spaces. The college's computer room is also open 24 hours a day. Wireless connectivity is available throughout college. The lodge is staffed at all times, providing security and a place to go with general queries.

Other on-site facilities include the common room, squash court, gym, bar, laundry room, cycle store, music practice rooms and the purpose-built Moser Theatre, which doubles as a badminton court. Students also have access to a large sports ground with a modern pavilion and a boathouse.

#### Student societies

Wadham's combined Student Union of undergraduates and graduates provides facilities and support for students, and organises charity, cultural, entertainment and welfare events. There is a strong culture of debate, encouraging freedom of thought and expression.

Wadham students organise a range of clubs and societies. There are frequent productions in the Moser Theatre and the college includes the 18th-century Holywell Music Room, Europe's first purpose-built concert hall, which is used for a wealth of musical activities. The chapel choir sings at Sunday evening services and special events. Students also participate in a range of intercollege sports competitions. For further information, visit [www.wadham.ox.ac.uk/why-choose-wadham](http://www.wadham.ox.ac.uk/why-choose-wadham).

What can you study at these colleges?  
page 146



# Worcester



## Worcester College, OX1 2HB

[www.worc.ox.ac.uk](http://www.worc.ox.ac.uk)

+44 (0) 1865 278300

### UCAS campus code: Z

#### Founded

1714

#### Student numbers

undergraduates 429

graduates 157

#### Admissions information

+44 (0) 1865 278391

[admissions@worc.ox.ac.uk](mailto:admissions@worc.ox.ac.uk)

#### Open days

29 and 30 June and 16 September 2016

[www.worc.ox.ac.uk/applying/undergraduates/open-days-and-admission-visits](http://www.worc.ox.ac.uk/applying/undergraduates/open-days-and-admission-visits)  
and

[ox.ac.uk/opendays](http://ox.ac.uk/opendays)

Worcester is one of the most beautiful of the colleges, with 26 acres of award-winning gardens and wooded grounds including a lake and on-site sports fields. It is a happy blend of ancient and modern, with buildings from medieval cottages to self-catering accommodation completed in the last decade. Undergraduates enjoy a wide range of extra-curricular activities including music, drama and sport, making Worcester a diverse, vibrant academic community.

### Location

The college entrance is close to the city centre and coach station, and a 10-minute walk from the railway station.

### Accommodation and meals

The college aims to offer accommodation to all undergraduates for three years of their degree. All rooms are on site or no more than 300 metres from the perimeter. Some are in historic buildings, but many have been recently built or refurbished, and over two-thirds are ensuite with access to good kitchen facilities. All rooms have internet connections and most rooms have a small refrigerator. There are also a number of shared student houses.

Worcester has a well-deserved reputation for excellent food at low prices, and many students choose to eat in the college's dining hall. Self-service breakfast, lunch and dinner are available each day. A served formal hall option is also available on several evenings each week.

### Facilities

The main undergraduate library has

approximately 65,000 volumes and is well funded for purchasing new books. There is a separate college law library and a magnificent Old Library, which houses collections of European importance. Individual work spaces are provided in all three libraries, two of which are open 24 hours a day. A computer room is set aside for undergraduate use and is also open 24 hours a day.

Within the college grounds are sports fields, tennis courts and a multi-gym. The college also maintains a boathouse on the River Thames.

Worcester is committed to enabling students with disabilities to participate as fully as possible in student life; applicants are advised to contact the Tutor for Admissions with details of any special needs.

### Student societies

Worcester students enjoy the many opportunities for extra-curricular activities that are offered by the college. There are teams of various standards in a wide range of sports, enabling students of all abilities to take part. Worcester has strong musical traditions, and the music society organises many activities throughout the year. Music practice facilities are available on site. Students may audition for instrumental awards, and organ and choral scholarships are also offered. An active dramatic society puts on regular productions, often staged in the college gardens. Having these facilities on site makes a harmonious blend of scholarship and recreation all the more achievable.



More on colleges:  
[ox.ac.uk/ugcolls](http://ox.ac.uk/ugcolls)



# Wycliffe Hall

Permanent Private Hall

for students aged 21+ only



## Wycliffe Hall, OX2 6PW

[www.wycliffehall.org.uk](http://www.wycliffehall.org.uk)

+44 (0) 1865 274200

### UCAS campus code\*: P

#### Founded

1877

#### Student numbers

undergraduates 99

graduates 27

#### Admissions information

+44 (0) 1865 274200

[admissions@wycliffe.ox.ac.uk](mailto:admissions@wycliffe.ox.ac.uk)

Admissions Officer: John Michaux

#### Open days

Open Days are held throughout the year –

[www.wycliffehall.org.uk/events](http://www.wycliffehall.org.uk/events).

If the dates are inconvenient, contact the Admissions Officer to arrange another time.

*\*If you choose this campus code when making your application we will contact you by email to confirm which hall you would like to apply to.*



Wycliffe Hall is an evangelical theological college. We aim to equip our students through excellent academic teaching, practical ministry experience and living as part of a vibrant and supportive Christian community. Wycliffe students and tutors consistently gain the highest academic awards within the University and our alumni have experienced some fantastic success as theologians, apologists and church leaders.

Our student body is delightfully diverse, comprising women and men of many different nationalities and traditions. Our students study for a range of ministries as ordained clergy, preachers, evangelists and scholars. Such an environment makes for a rich and creative milieu of ideas, and lifelong friendships.

Wycliffe is a warm and welcoming college which places a strong emphasis on Christian community and commitment. Students are encouraged to play an active part in the life and worship of the hall, as far as their course allows.

#### Location

The hall is a 5-minute walk from the historic centre of Oxford and is located adjacent to the beautiful University Parks.

#### Accommodation and meals

Most single students live in study rooms on the main site at Wycliffe Hall. Students with families are accommodated off site with full access to the crèche and other student facilities.

#### Courses offered

Wycliffe accepts mature students (those aged 21 and over) to study for the BA in Theology and Religion or the BA in Philosophy and Theology, usually with Senior Status (where the student has already completed an undergraduate degree, and may start an Oxford undergraduate degree in its second year).

Wycliffe also offers specialist courses for those wishing to train for Christian ministry: see [www.wycliffehall.org.uk/prospective-students](http://www.wycliffehall.org.uk/prospective-students).

#### Facilities

Wycliffe Hall has outstanding facilities including one of the best theological libraries in the University. All student rooms have Wi-Fi and access to the University computer network.

#### Student societies

All students are full members of a thriving common room. There are regular football and cricket matches and opportunities to participate in a broad range of other sports including rugby and rowing. Students are encouraged to take a full part in the wide range of societies across the University.

What can you study at these colleges?

page 146