

# Gazette Supplement



## Student Numbers 2015

### Introduction

Student statistics tables for 2015–16 are now available on the Academic Administration Division (AAD) website: [www.admin.ox.ac.uk/ac-div/statistics/student](http://www.admin.ox.ac.uk/ac-div/statistics/student).

The statistics provide an overview of the student body based on a snapshot taken on 1 December 2015 and allow comparison with the previous eight years. The same snapshot forms the basis of the Higher Education Student Early Statistics return ([www.hefce.ac.uk/learning/datacoll/heses](http://www.hefce.ac.uk/learning/datacoll/heses)) and the Student Number Planning Exercise, but with some small criteria differences. These are explained on the website.

This supplement contains only high-level overviews of the student population. A complete set of tables and charts is on the website. Six different views are available:

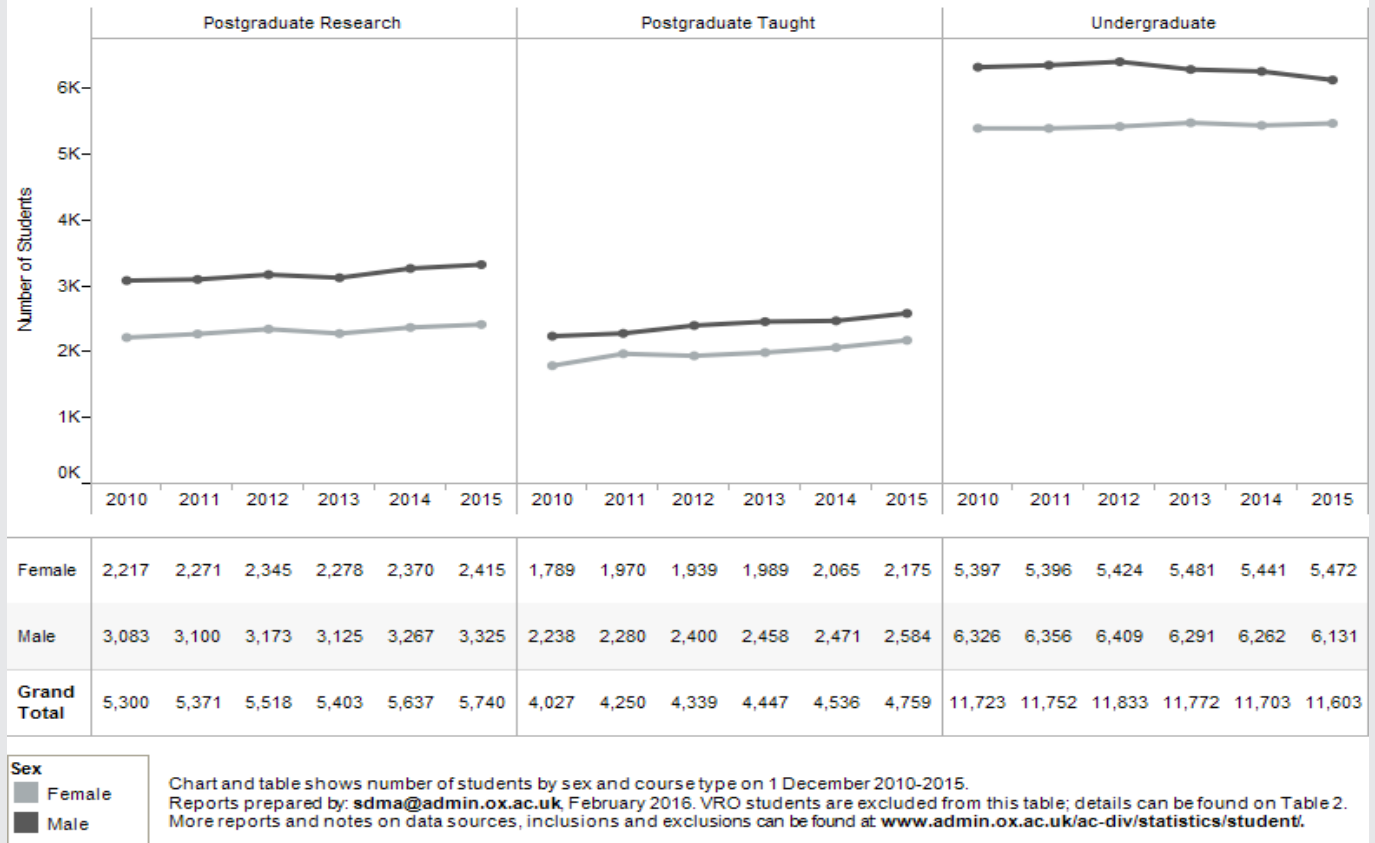
- Timelines - trends of different categories, by division, over time
- One-year summary - high-level overview of one year's snapshot
- Detail table - complete details by programme/programme type for any single year
- Nationality/domicile details
- College populations over time - total student numbers for eight years
- College details - table with filters that allow different views of the college populations in any given year.

A complete set of terms, definitions, abbreviations and notes on exclusions/inclusions can also be found on the website. The data is prepared by the Student Data Management and Analysis team. Questions concerning the content or format of these tables should be directed to [sdma@admin.ox.ac.uk](mailto:sdma@admin.ox.ac.uk).

### Charts and tables in this supplement

1. Students by course type and sex, 2010–15	350
2. Students by division, course type and attendance type, 1 December 2015	350
3. Students by college and course type, 1 December 2015	351
4. Students by college, attendance type and sex, 1 December 2015	352

**1. Students by course type and sex, 2010-2015**



**2. Students by division, course type and attendance type, 1 December 2015**

Division	Award Programme Type	Full time	Part time	Total	Full time	Part time	Total
Medical Sciences	Postgraduate Research	1,316	3	1,319	100%	0%	100%
	Postgraduate Taught	197	8	205	96%	4%	100%
	Undergraduate	1,633		1,633	100%		100%
	<b>Total</b>	<b>3,146</b>	<b>11</b>	<b>3,157</b>	<b>100%</b>	<b>0%</b>	<b>100%</b>
Social Sciences	Postgraduate Research	1,160	15	1,175	99%	1%	100%
	Postgraduate Taught	1,918	603	2,521	76%	24%	100%
	Undergraduate	2,039		2,039	100%		100%
	<b>Total</b>	<b>5,117</b>	<b>618</b>	<b>5,735</b>	<b>89%</b>	<b>11%</b>	<b>100%</b>
MPLS	Postgraduate Research	2,164	8	2,172	100%	0%	100%
	Postgraduate Taught	203	368	571	36%	64%	100%
	Undergraduate	3,465		3,465	100%		100%
	<b>Total</b>	<b>5,832</b>	<b>376</b>	<b>6,208</b>	<b>94%</b>	<b>6%</b>	<b>100%</b>
Humanities	Postgraduate Research	952	47	999	95%	5%	100%
	Postgraduate Taught	762	20	782	97%	3%	100%
	Undergraduate	3,949	21	3,970	99%	1%	100%
	<b>Total</b>	<b>5,663</b>	<b>88</b>	<b>5,751</b>	<b>98%</b>	<b>2%</b>	<b>100%</b>
Continuing Education	Postgraduate Research		75	75		100%	100%
	Postgraduate Taught	19	661	680	3%	97%	100%
	Undergraduate	58	438	496	12%	88%	100%
	<b>Total</b>	<b>77</b>	<b>1,174</b>	<b>1,251</b>	<b>6%</b>	<b>94%</b>	<b>100%</b>
VRO	Visiting, Recognised, Other	500		500	100%		100%
	<b>Total</b>	<b>500</b>		<b>500</b>	<b>100%</b>		<b>100%</b>
<b>Grand Total</b>		<b>20,335</b>	<b>2,267</b>	<b>22,602</b>	<b>90%</b>	<b>10%</b>	<b>100%</b>

Table shows number of students by division, course type and attendance type on 1 December 2015. Reports prepared by: [sdma@admin.ox.ac.uk](mailto:sdma@admin.ox.ac.uk), February 2016. More reports and notes on data sources, inclusions and exclusions can be found at [www.admin.ox.ac.uk/ac-div/statistics/student/](http://www.admin.ox.ac.uk/ac-div/statistics/student/).

**3. Students by college and course type, 1 December 2015**

College Name	Postgraduate Research		Postgraduate Taught		Undergraduate		Visiting, Recognised, Other		Grand Total	
	Students	% of college population	Students	% of college population	Students	% of college population	Students	% of college population	Students	% of college population
All Souls College	6	100.0%							6	100.0%
Balliol College	205	31.3%	74	11.3%	373	56.9%	3	0.5%	655	100.0%
Blackfriars	10	19.2%	29	55.8%	4	7.7%	9	17.3%	52	100.0%
Brasenose College	125	21.8%	78	13.6%	367	64.0%	3	0.5%	573	100.0%
Campion Hall	6	75.0%	2	25.0%					8	100.0%
Christ Church	114	19.2%	50	8.4%	428	72.2%	1	0.2%	593	100.0%
Corpus Christi College	73	21.3%	21	6.1%	249	72.6%			343	100.0%
Exeter College	111	21.1%	75	14.2%	316	60.0%	25	4.7%	527	100.0%
Green Templeton College	216	39.9%	225	41.5%	101	18.6%			542	100.0%
Harris Manchester College	30	13.8%	104	47.9%	82	37.8%	1	0.5%	217	100.0%
Hertford College	119	19.1%	85	13.7%	394	63.3%	24	3.9%	622	100.0%
Jesus College	133	25.7%	52	10.1%	330	63.8%	2	0.4%	517	100.0%
Keble College	138	21.3%	89	13.8%	416	64.3%	4	0.6%	647	100.0%
Kellogg College	174	19.2%	731	80.8%					905	100.0%
Lady Margaret Hall	127	20.5%	86	13.8%	395	63.6%	13	2.1%	621	100.0%
Linacre College	294	67.3%	143	32.7%					437	100.0%
Lincoln College	206	33.4%	110	17.8%	297	48.1%	4	0.6%	617	100.0%
Magdalen College	132	23.0%	44	7.7%	393	68.6%	4	0.7%	573	100.0%
Mansfield College	74	19.2%	56	14.5%	220	57.1%	35	9.1%	385	100.0%
Merton College	202	37.1%	51	9.4%	291	53.4%	1	0.2%	545	100.0%
New College	153	21.9%	103	14.8%	429	61.5%	13	1.9%	698	100.0%
Nuffield College	59	72.8%	22	27.2%					81	100.0%
Oriel College	109	21.8%	63	12.6%	325	64.9%	4	0.8%	501	100.0%
Pembroke College	131	20.9%	96	15.3%	365	58.2%	35	5.6%	627	100.0%
Regent's Park College	19	9.7%	48	24.6%	115	59.0%	13	6.7%	195	100.0%
Ripon College Cuddesdon			9	34.6%	17	65.4%			26	100.0%
Somerville College	111	20.0%	60	10.8%	385	69.2%			556	100.0%
St Anne's College	149	19.2%	173	22.2%	423	54.4%	33	4.2%	778	100.0%
St Antony's College	187	41.3%	264	58.3%			2	0.4%	453	100.0%
St Benet's Hall	2	3.1%	14	21.9%	48	75.0%			64	100.0%
St Catherine's College	178	19.6%	209	23.0%	476	52.4%	45	5.0%	908	100.0%
St Cross College	397	71.1%	160	28.7%			1	0.2%	558	100.0%
St Edmund Hall	224	31.2%	67	9.3%	404	56.2%	24	3.3%	719	100.0%
St Hilda's College	111	19.3%	52	9.0%	411	71.4%	2	0.3%	576	100.0%
St Hugh's College	108	14.1%	225	29.3%	432	56.3%	3	0.4%	768	100.0%
St John's College	182	30.0%	39	6.4%	385	63.4%	1	0.2%	607	100.0%
St Peter's College	116	21.0%	72	13.0%	340	61.6%	24	4.3%	552	100.0%
St Stephen's House	10	16.1%	35	56.5%	17	27.4%			62	100.0%
The Queen's College	104	21.5%	34	7.0%	342	70.7%	4	0.8%	484	100.0%
Trinity College	105	24.8%	31	7.3%	286	67.5%	2	0.5%	424	100.0%
University College	158	28.1%	41	7.3%	363	64.5%	1	0.2%	563	100.0%
Wadham College	104	16.0%	62	9.5%	451	69.4%	33	5.1%	650	100.0%
Wolfson College	429	77.3%	126	22.7%					555	100.0%
Worcester College	91	15.1%	55	9.2%	428	71.2%	27	4.5%	601	100.0%
Wycliffe Hall	8	4.8%	24	14.5%	76	46.1%	57	34.5%	165	100.0%
No College			570	54.5%	429	41.0%	47	4.5%	1,046	100.0%
<b>Grand Total</b>	<b>5,740</b>	<b>25.4%</b>	<b>4,759</b>	<b>21.1%</b>	<b>11,603</b>	<b>51.3%</b>	<b>500</b>	<b>2.2%</b>	<b>22,602</b>	<b>100.0%</b>

Table shows number of students by college and course type on 1 December 2015.

Reports prepared by: [sdma@admin.ox.ac.uk](mailto:sdma@admin.ox.ac.uk), February 2016.More reports and notes on data sources, inclusions and exclusions can be found at: [www.admin.ox.ac.uk/ac-div/statistics/student/](http://www.admin.ox.ac.uk/ac-div/statistics/student/).

## 4. Students by college, attendance type and sex, 1 December 2015

College name	Full time				Part time				Grand Total	
	Female		Male		Female		Male		Students	% of college population
	Students	% of college population	Students	% of college population	Students	% of college population	Students	% of college population		
All Souls College	2	33.3%	4	66.7%					6	100.0%
Balliol College	264	40.3%	384	58.6%	1	0.2%	6	0.9%	655	100.0%
Blackfriars Hall	16	30.8%	29	55.8%	4	7.7%	3	5.8%	52	100.0%
Brasenose College	252	44.0%	310	54.1%	2	0.3%	9	1.6%	573	100.0%
Campion Hall			8	100.0%					8	100.0%
Christ Church	239	40.3%	335	56.5%	2	0.3%	17	2.9%	593	100.0%
Corpus Christi College	154	44.9%	185	53.9%	2	0.6%	2	0.6%	343	100.0%
Exeter College	232	44.0%	268	50.9%	5	0.9%	22	4.2%	527	100.0%
Green Templeton College	275	50.7%	241	44.5%	12	2.2%	14	2.6%	542	100.0%
Harris Manchester College	98	45.2%	87	40.1%	15	6.9%	17	7.8%	217	100.0%
Hertford College	319	51.3%	294	47.3%	4	0.6%	5	0.8%	622	100.0%
Jesus College	224	43.3%	287	55.5%	1	0.2%	5	1.0%	517	100.0%
Keble College	248	38.3%	384	59.4%	5	0.8%	10	1.5%	647	100.0%
Kellogg College	125	13.8%	106	11.7%	223	24.6%	451	49.8%	905	100.0%
Lady Margaret Hall	306	49.3%	311	50.1%	3	0.5%	1	0.2%	621	100.0%
Linacre College	197	45.1%	211	48.3%	10	2.3%	19	4.3%	437	100.0%
Lincoln College	298	48.3%	302	48.9%	6	1.0%	11	1.8%	617	100.0%
Magdalen College	234	40.8%	339	59.2%					573	100.0%
Mansfield College	171	44.4%	214	55.6%					385	100.0%
Merton College	236	43.3%	303	55.6%	3	0.6%	3	0.6%	545	100.0%
New College	287	41.1%	366	52.4%	25	3.6%	20	2.9%	698	100.0%
Nuffield College	34	42.0%	47	58.0%					81	100.0%
Oriel College	225	44.9%	274	54.7%	1	0.2%	1	0.2%	501	100.0%
Pembroke College	270	43.1%	328	52.3%	4	0.6%	25	4.0%	627	100.0%
The Queen's College	226	46.7%	256	52.9%	1	0.2%	1	0.2%	484	100.0%
Regent's Park College	104	53.3%	70	35.9%	8	4.1%	13	6.7%	195	100.0%
St Anne's College	377	48.5%	350	45.0%	9	1.2%	42	5.4%	778	100.0%
St Antony's College	230	50.8%	218	48.1%	3	0.7%	2	0.4%	453	100.0%
St Benet's Hall	12	18.8%	52	81.3%					64	100.0%
St Catherine's College	364	40.1%	453	49.9%	41	4.5%	50	5.5%	908	100.0%
St Cross College	264	47.3%	287	51.4%	1	0.2%	6	1.1%	558	100.0%
St Edmund Hall	316	43.9%	402	55.9%			1	0.1%	719	100.0%
St Hilda's College	279	48.4%	296	51.4%	1	0.2%			576	100.0%
St Hugh's College	338	44.0%	389	50.7%	5	0.7%	36	4.7%	768	100.0%
St John's College	273	45.0%	332	54.7%	1	0.2%	1	0.2%	607	100.0%
St Peter's College	250	45.3%	295	53.4%	3	0.5%	4	0.7%	552	100.0%
St Stephen's House	18	29.0%	29	46.8%	6	9.7%	9	14.5%	62	100.0%
Somerville College	283	50.9%	267	48.0%			6	1.1%	556	100.0%
Trinity College	188	44.3%	227	53.5%	1	0.2%	8	1.9%	424	100.0%
University College	238	42.3%	324	57.5%			1	0.2%	563	100.0%
Wadham College	297	45.7%	348	53.5%	2	0.3%	3	0.5%	650	100.0%
Wolfson College	234	42.2%	315	56.8%	4	0.7%	2	0.4%	555	100.0%
Worcester College	309	51.4%	288	47.9%			4	0.7%	601	100.0%
Wycliffe Hall	67	40.6%	70	42.4%	10	6.1%	18	10.9%	165	100.0%
No college	23	2.2%	37	3.5%	534	51.1%	452	43.2%	1,046	100.0%
Ripon College Cuddesdon	5	19.2%	12	46.2%	2	7.7%	7	26.9%	26	100.0%
<b>Grand Total</b>	<b>9,401</b>	<b>41.6%</b>	<b>10,934</b>	<b>48.4%</b>	<b>960</b>	<b>4.2%</b>	<b>1,307</b>	<b>5.8%</b>	<b>22,602</b>	<b>100.0%</b>

Count of students and percentage of students broken down by attendance type and sex by college. The data is based on a snapshot taken on 1 December 2015.